

High Cycle Actuation 1,000,000 Guarantee



Available in spring return and Double acting

High Cycle Bearings

Shaft bearings isolate the pinion gear from the housing and support the shaft for high cycle applications.

Rugged Tooth Design

The pinion teeth are engaged the full length and stroke of the piston. The pinion height allows manual override without disturbing the indicated positions.

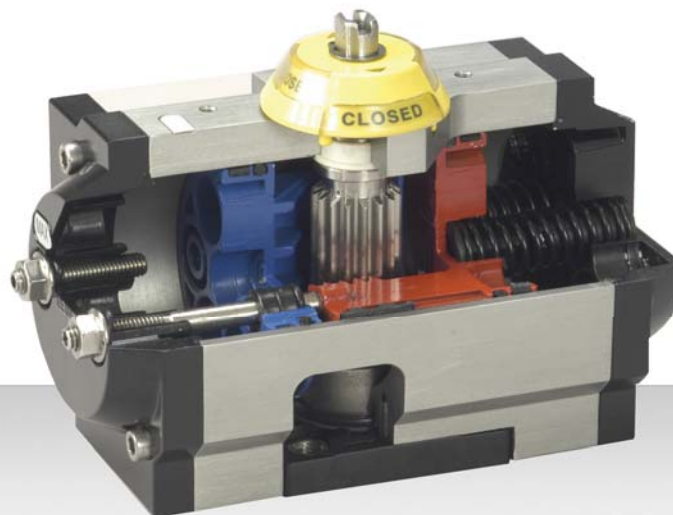
Degree of Travel

The standard angle of rotation is 90°. additional travel rotations of 120°, 135°, 150° and 180° are available for sizes UT16 and larger, Elite Valve features dual travel stops that provide $\pm 10^\circ$ of travel in a standard 90° actuator.

Features

Designed for High Performance Long Life

- Springs & Guides - Carbon steel & coated for corrosion resistance
- Bearing Pad - Large contact area for long life
- Seals - Temperature range from -10 °F ~ 176°F With Buna N Nitrile
- Pinion - standard ASTM A314 (303) EDA 0050-0075, Carbon Steel Electroless nickel coated for larger sizes
- End Caps & Piston - die-cast Aluminum Pistons are coated for Corrosion resistance. End Caps are die-cast aluminum and epoxy powder coated.
- Body - Extruded aluminum body (ASTM B210 6063) is Internally machined to exact specifications and lapped to reduce friction. All surfaces internally are anodized.
- Mounting Pad - ISO 5211 for either direct mount or with an ISO bracket robust star drive, with NAMUR mount flange for solenoids & switches



SPRING RETURN		Pos. 1 CLOSING TORQUE (SPRINGS)		POS. 2 OPENING TORQUE						TORQUE OUTPUT /IN/LBS				ISO BRACKET	COUPLING DIMENS
				40 PSIG		60 PSIG		80 PSIG		100 PSIG		120 PSIG			
TYPE	NO. OF SPRINGS	START	END	START	END	START	END	START	END	START	END	START	END		
ESA 0030 ESA 0050	1+1	33	22	40	29	72	61	103	92	134	123	165	154	F04	0.433
	2+2	66	44	--	--	50	28	81	59	112	90	143	121		
	3+3	99	66	--	--	--	--	58	27	90	66	121	88		
ESA 0075	2+2	75	53	84	62	153	131	222	200	291	269	359	337	F05/F07	0.551
	3+3	112	81	56	25	125	94	194	163	263	232	331	300		
	4+4	150	107	--	--	99	56	168	125	237	194	305	262		
	5+5	187	134	--	--	72	19	141	88	210	157	278	225		
	7+5	224	160	--	--	--	--	115	51	184	120	252	188		
ESA 0120	2+2	93	64	116	87	206	117	296	267	386	357	476	447	F05/F07	0.551
	3+3	139	96	84	41	174	131	264	221	354	311	444	401		
	4+4	185	128	--	--	142	85	232	175	322	265	412	355		
	5+5	232	160	--	--	110	38	200	128	290	218	380	308		
	7+5	278	192	--	--	--	--	168	82	258	172	348	262		
ESA 0200	2+2	122	92	158	128	283	253	408	378	533	503	658	628	F05/F07	0.670
	3+3	184	138	112	66	237	191	362	316	487	441	612	566		
	4+4	245	184	66	5	191	130	316	255	441	380	566	505		
	5+5	2307	230	--	--	145	68	270	193	395	318	520	443		
	7+5	369	278	--	--	97	6	222	131	347	256	472	381		
ESA 0275	2+2	196	124	251	179	438	366	626	554	813	741	1001	929	F05/F07	0.670
	3+3	294	185	190	81	377	268	565	456	752	643	940	831		
	4+4	392	247	--	--	315	170	503	358	690	545	878	733		
	5+5	490	309	--	--	253	72	441	260	628	447	816	635		
	7+5	588	372	--	--	--	--	378	162	565	349	753	537		
ESA 0350	2+2	251	187	313	249	563	499	813	749	1063	999	1313	1249	F05/F07	0.670
	3+3	376	280	220	124	470	374	720	624	970	874	1220	1124		
	4+4	502	374	--	--	376	248	626	498	876	748	1126	998		
	5+5	627	467	--	--	283	123	533	373	783	623	1033	873		
	7+5	653	560	--	--	--	--	440	247	690	497	940	747		
ESA 0600	2+2	412	306	494	388	894	788	1294	1188	1694	1588	2094	1988	F07/F10	0.866
	3+3	617	461	339	183	739	583	1139	983	1539	1383	1939	1783		
	4+4	824	614	--	--	586	376	986	776	1386	1176	1786	1576		
	5+5	1029	767	--	--	433	171	833	571	1233	971	1633	1371		
	7+5	1236	921	--	--	--	--	679	364	1079	764	1479	1164		
ESA 0800	2+2	505	371	629	495	1129	995	1629	1495	2129	1995	2629	2495	F07/F10	0.866
	3+3	757	556	444	243	944	743	1444	1243	1944	1743	2444	2243		
	4+4	1011	741	--	--	759	489	1259	989	1759	1489	2259	1989		
	5+5	1263	929	--	--	572	237	1072	737	1572	1237	2072	1737		
	7+5	1516	1113	--	--	--	--	887	484	1387	984	1887	1484		
ESA 1200	2+2	890	560	1002	672	1784	1454	2565	2235	3346	3016	4127	3797	F07/F10	0.866
	3+3	1334	840	722	228	1504	1010	2285	1791	3066	2572	3847	3353		
	4+4	1779	1120	--	--	1224	565	2005	1346	2786	2127	3567	2908		
	5+5	2224	1399	--	--	945	120	1726	901	2507	1682	3288	2463		
	7+5	2669	1679	--	--	--	--	1446	456	2227	1237	3008	2018		
ESA 1500	2+2	1101	869	1381	1149	2506	2274	3631	3399	4756	4524	5881	5649	F10/F12	1.063
	3+3	1652	1304	946	598	2071	1723	3196	2848	4321	3973	5446	5098		
	4+4	2203	1738	512	47	1637	1172	2762	2297	3887	3422	5012	4547		
	5+5	2754	2173	--	--	1202	621	2327	1746	3452	3871	4577	3996		
	7+5	3303	2607	--	--	768	72	1893	1197	3018	2322	4143	3447		
ESA 2000	2+2	1487	1055	1945	1513	3445	3013	4945	4513	6445	6013	7945	7513	F10/F12	1.063
	3+3	2231	1583	1417	769	2917	2269	4417	3769	5917	5269	7417	6769		
	4+4	2974	2111	889	26	2389	1526	3889	3026	5389	4526	6889	6026		
	5+5	3718	2638	--	--	1862	782	3362	2282	4862	3782	6362	5282		
	7+5	4462	3166	--	--	1334	38	2834	1538	4334	3038	5834	4538		
ESA 3500	2+2	2146	1711	2839	2404	5114	4679	7389	6954	9664	2992	11939	11504	F14	1.417
	3+3	3220	2566	1984	1330	4259	3605	6534	5880	8809	8155	11084	10430		
	4+4	4293	3422	1128	257	3403	2532	5678	4807	7953	7082	10228	9357		
	5+5	5366	4277	--	--	2548	1459	4823	3734	7098	6009	9373	8284		
	7+5	6438	5133	--	--	1692	387	3967	3662	6242	4937	8517	7212		
ESA 5000	2+2	2810	2084	3916	3190	6916	6190	9916	9190	12916	12190	15916	15190	F14	1.417
	3+3	4215	3126	2874	1785	5874	4785	8874	7785	11874	10785	14874	13785		
	4+4	5619	4169	1831	381	4831	3381	7831	6381	10831	9381	13831	12381		
	5+5	7024	5211	--	--	3789	1976	6789	4976	9789	7976	12789	10976		
	7+5	8430	6252	--	--	--	--	5748	3570	8784	6570	11748	9570		

Quality Assurance

All Actuators are factory pressure and leak tested. Leaving the shop mounted on the valve they are wrapped and individually taped for added protection while being shipped

Compact Design

Elite Valve stocks a rack & pinion pneumatic actuator produces linear torque output in a compact design utilizing the same body and end caps for double acting spring return actuators

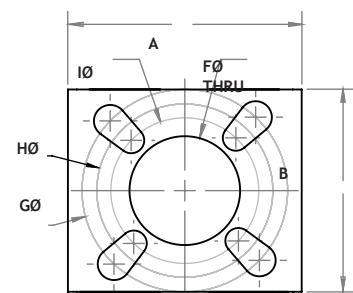
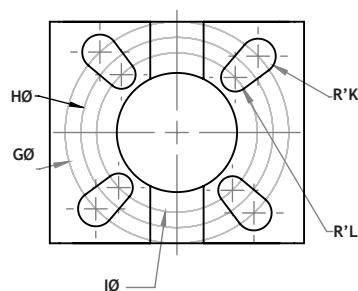
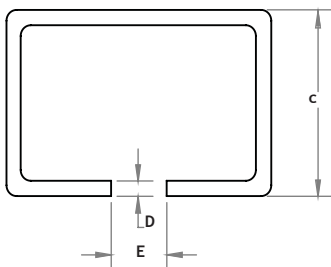


DOUBLE ACTING					
TYPE	40 PSIG	60 PSIG	80 PSIG	100 PSIG	120 PSIG
EDA 0030 (TECHNOPOLYMER)	62	94	125	156	187
EDA 0050	62	94	125	156	187
EDA 0075	137	206	275	344	412
EDA 0120	180	270	360	450	540
EDA 0275	250	375	500	625	750
EDA 0350	375	562	750	937	1125
EDA 0500	500	750	1000	1250	1500
EDA 0600	800	1200	1600	2000	2400
EDA 0800	1000	1500	2000	2500	3000
EDA 1200	1562	2344	3125	3906	4687
EDA 1500	2250	3375	4500	5625	6750
EDA 2000	3000	4500	6000	7500	9000
EDA 3500	4550	6825	9100	11375	13650
EDA 5000	6000	9000	12000	15000	18000

Mounting Brackets



Model/Dimensions	A	B	C	D	E	F	G	H	I	J	K
1# (F03,F04,F05)	2.24	1.97	1.46	0.12	0.47	1.06	1.97	1.65	1.42	0.15	0.13
2# (F04,F05)	2.95	2.56	1.57	0.12	0.63	1.30	2.76	1.97	1.65	0.19	0.13
3# (F07,F010,F12)	4.84	4.33	2.76	0.16	1.18	2.28	4.92	4.02	2.76	0.30	0.24
4# (F07,F10,F12)	4.84	4.33	3.15	0.16	1.18	2.28	4.92	4.02	2.76	0.30	0.24
5# (F012,F14,F16)	6.93	5.83	3.78	0.20	2.64	4.25	6.50	5.51	4.92	0.43	0.26

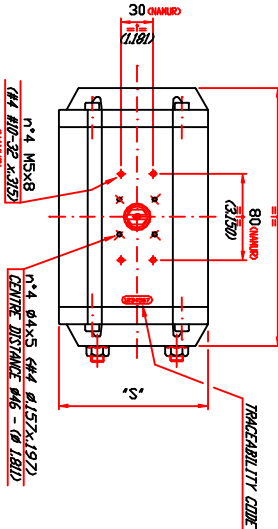
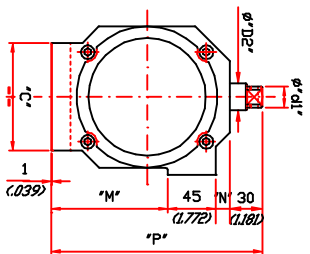
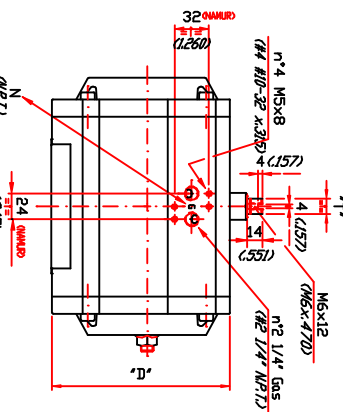
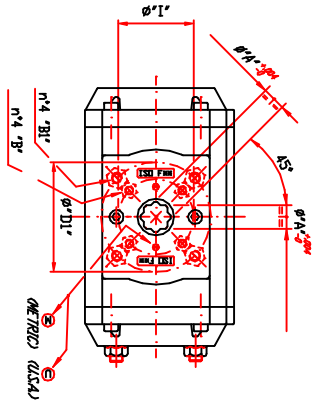
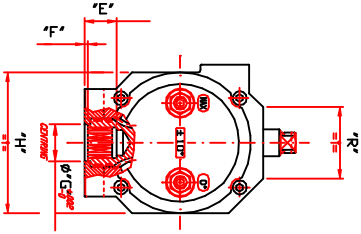




Elite Valve Canada
775 Roper Street
N7S 5G7
Sarnia, Ontario, Canada
www.elitevalve.com

EDA0275-1200
ESA0275-1200

DIMENSIONS TO
ISO 5211 DIN 9397
AND MANURE VALVE VDR 3845



EDA0275/ESA0275	mm	φ16
EDA0950/ESA0950	mm	φ22
EDA0800/ESA0800	mm	φ30
EDA1200/ESA1200	mm	φ42

Model	IN	φD1	φD2	H	H1	H2	L	L1	L2	L3	L4	L5	L6	L7	L8	L9	L10
EDA0275 & ESA0275	mm	φ14	φ18	23	2	φ33	86	177	φ50	63	5	143	46	96	10		
EDA0350 & ESA0350	mm	φ19.5	φ22	23	2	φ33	86	239	φ50	63	5	143	46	96	14		
EDA0600 & ESA0600	mm	φ19.5	φ25	30	3	φ34	131	246	φ70	108	13	196	66	138	14		
EDA0800 & ESA0800	mm	φ28	φ31	30	3	φ34	131	290	φ70	108	13	196	66	138	20		
EDA0900 & ESA0900	mm	φ1.02	φ1.220	1.181	0.118	φ1.340	5.157	11.417	φ2.756	4.252	0.512	7.717	2.598	5.433	0.787		
EDA1200 & ESA1200	mm	φ28	φ38	30	3	φ34	146	351	φ70	116	17	208	75	151	20		

Model	IN	φD1	φD2	H	H1	H2	L	L1	L2	L3	L4	L5	L6	L7	L8	L9	L10
EDA0275/ESA0275	mm	φ16	φ18	23	2	φ33	86	177	φ50	63	5	143	46	96	10		
EDA0950/ESA0950	mm	φ22	φ25	30	3	φ34	131	246	φ70	108	13	196	66	138	14		
EDA0800/ESA0800	mm	φ30	φ31	30	3	φ34	131	290	φ70	108	13	196	66	138	20		
EDA1200/ESA1200	mm	φ42	φ45	40	4	φ36	151	351	φ90	126	17	228	85	171	20		

Elite Valve Canada

Tel: (519)-3328809

REV.	REVISION NOTE	BY	CHK	APP	(DD/MN/YR)	PROJECT NO.	DRAWN BY	CW	13/12/04	DRAWING	EDA & ESA 0275-1200
							CHECKED BY	JW		TITLE	EDA & ESA 0275-1200
							APPROVED BY	JW		PLOT SCALE	EDA & ESA 0275-1200
							PROJ. ENGR.			DWG SCALE	EDA & ESA 0275-1200
1	ISSUED FOR REVIEW	CW	JW	JW	13/12/04					N.T.S.	N.T.S.