

E3200/E3500 EXCALIBER 1/4"-2"



Available E3200 - Reduced Port and E3500 - Full Port

Features

Designed for High Pressure Temperature

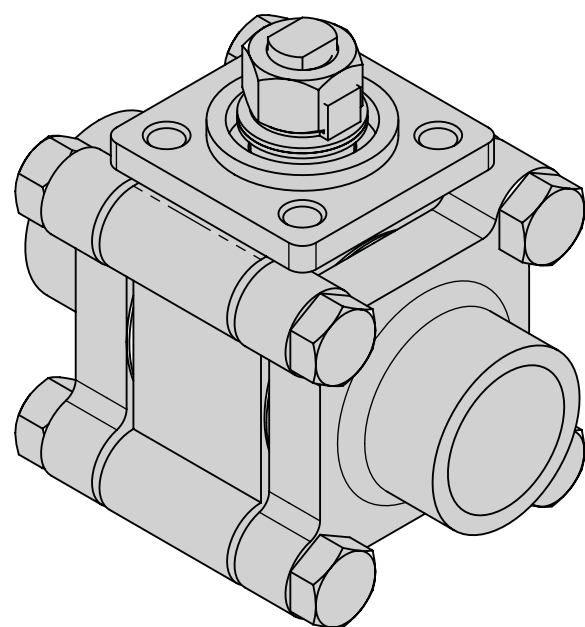
- Investment cast components
- Material - WCB | 316 | Alloy 20
- Blow-out-Proof stem design, antistatic device.
- Four point Iso 5211 mounting pad bolt circle
- Two Point Locking Device
- Available in stainless steel and carbon construction
- Steam rated, for chemical and industrial applications

Standard Compliance

- ASME B16. 34 Class 600
- ASME B16. 25
- API 598

Specifications:

- End connection: Threaded, Socket weld, Butt weld
- Temperature Range: 180° - 560° F (See temperature curve)
- Working pressure: 1/2"-1" 2000 psi WOG
1-14"-2" 1500 psi WOG



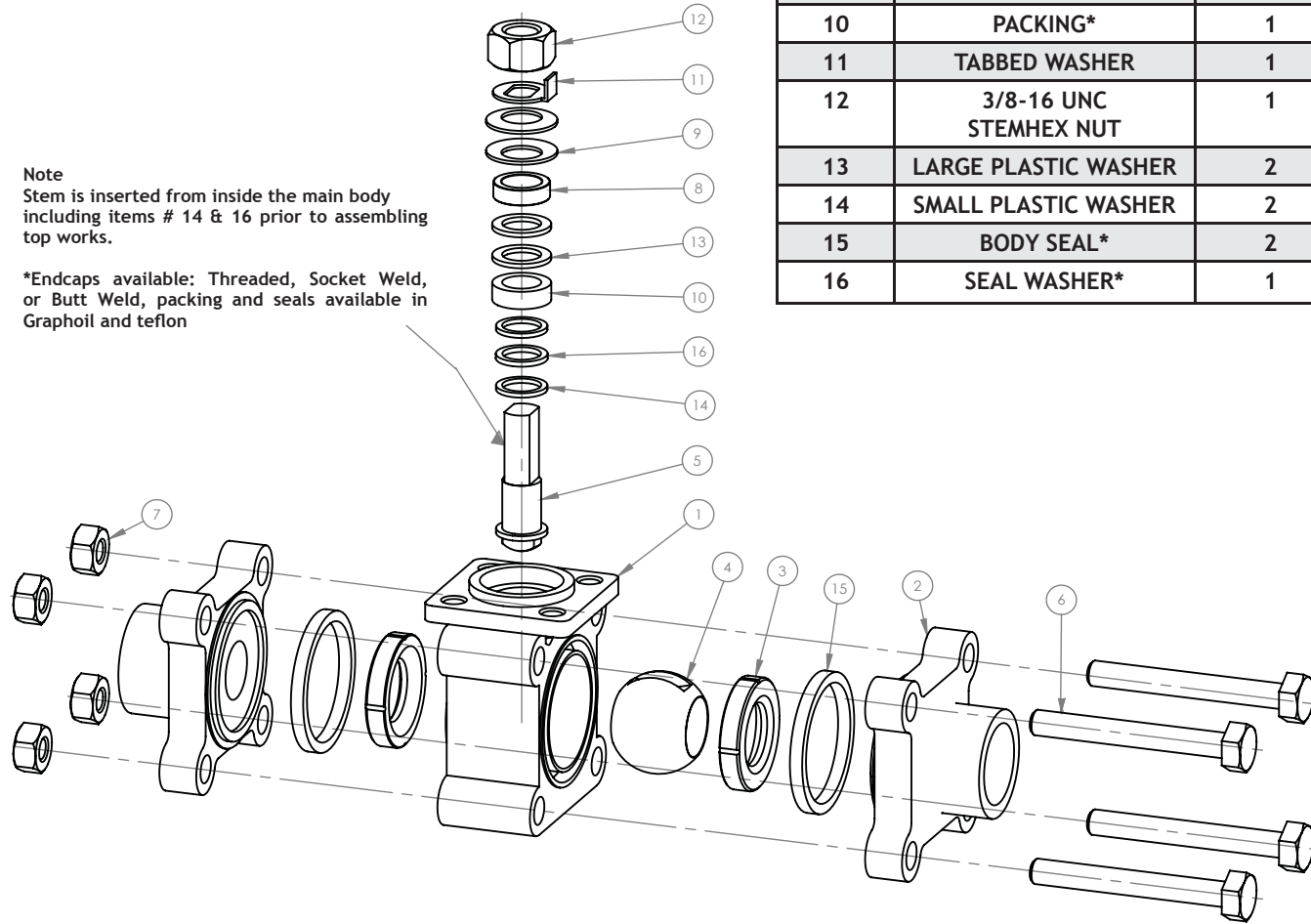
Parts List and Assembly View



ITEM NO.	PARTS DESCRIPTION	QTY
1	MAIN BODY	1
2	END CAP *	2
3	SEAT	1
4	BALL	2
5	STEM	1
6	BOLTS	4
7	END CAP HEX NUT	4
8	SLEEVE (SS)	1
9	BELLEVILLE SPRING WASHER	2
10	PACKING*	1
11	TABBED WASHER	1
12	3/8-16 UNC STEM HEX NUT	1
13	LARGE PLASTIC WASHER	2
14	SMALL PLASTIC WASHER	2
15	BODY SEAL*	2
16	SEAL WASHER*	1

Note
Stem is inserted from inside the main body including items # 14 & 16 prior to assembling top works.

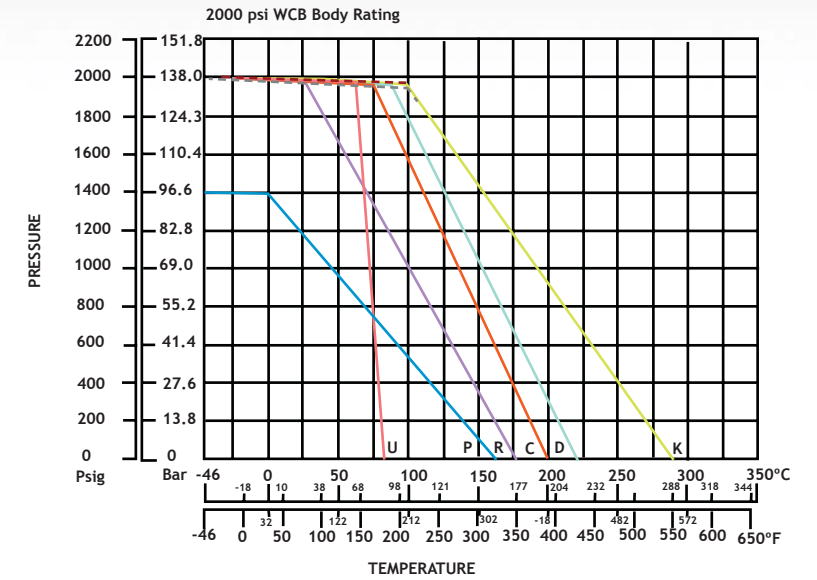
*Endcaps available: Threaded, Socket Weld, or Butt Weld, packing and seals available in Graphoil and teflon



Pressure Temperature Ratings

LEGEND

- WCB — — — — —
- CF8M - - - - -
- P: VIRGIN PTFE —————
- R: 15% GLASS FILLED —————
- U: UHMWPE —————
- D: 50% STAINLESS STEEL FILLED PTFE —————
- C: CARBON FILLED PTFE —————
- K: PEEK —————



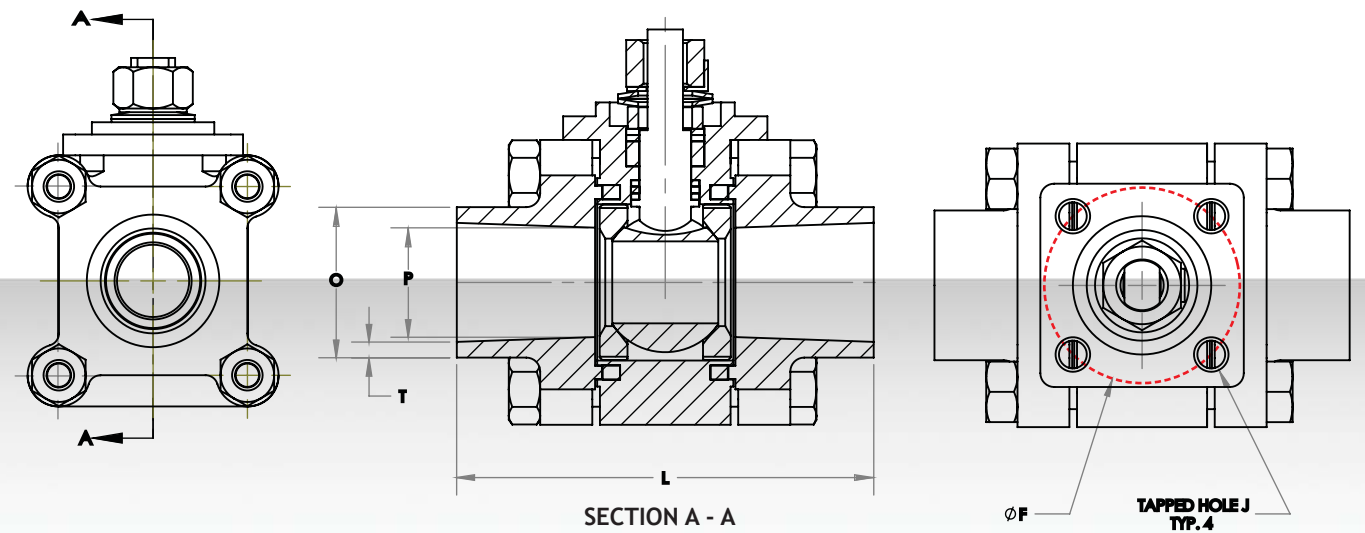
DIMENSIONS

Full Bore

SIZE	P	O	F	L	M	Tsch40
1/4"	0.39	0.89	F03	2.55	M5	0.08
3/8"	0.39	0.89	F03	2.85	M5	0.09
1/2"	0.60	0.89	F03	2.85	M5	0.10
3/4"	1.27	0.89	F03	3.36	M5	0.11
1"	1.01	1.31	F04	4.14	M5	0.13
1-1/4"	1.25	1.65	F04	4.34	M5	0.14
1-1/2"	1.49	1.91	F05	5.05	M6	0.14
2"	1.96	2.38	F05	5.59	M6	0.15

Reduced Bore

SIZE	P	O	F	L	M	T
1/2"	0.39	0.85	F03	2.85	M5	0.09
3/4"	0.60	1.07	F03	2.85	M5	0.10
1"	0.78	1.33	F04	3.36	M5	0.11
1-1/4"	1.01	1.68	F04	4.15	M5	0.13
1-1/2"	1.25	1.91	F04	4.37	M5	0.14
2"	1.49	2.38	F05	5.01	M6	0.14
2-1/2"	1.96	2.99	F05	5.70	M6	0.15



** For material list and options please see page 4

FLOW CHARACTERISTICS

E3200 Reduced Bore

E3500 Full Bore

Opening Turn Torque, Flow Characteristics & Weights			
3 Piece Ball Valves, Reduced Bore, 2000 psi			
Size	Weights kgs/pc	Torque in/lbs	Cv Factor
1/4"	0.7	39	20
1/2"	0.7	39	37
3/4"	1.1	48	68
1"	1.7	83	110
1-1/4"	2.4	91	185
1-1/2"	3.6	100	267
2"	5.8	130	485

Opening Turn Torque, Flow Characteristics & Weights			
3 Piece Ball Valves, Full Bore, 2000 psi			
Size	Weights kgs/pc	Torque in/lbs	Cv Factor
1/4"	0.7	39	37
1/2"	0.7	48	68
3/4"	1.1	83	110
1"	1.7	91	185
1-1/4"	2.4	100	267
1-1/2"	3.6	130	485
2"	5.8	-	-

ORDERING INFORMATION

MODEL	BODY		BALL		SEAT		PACKING		END CAP DESIGN		SIZE	
E3200	WCB CARBON	W	316 STAINLESS	S	RTFE(15%)	R	PTFE	P	SOCKET	SW	1/4"	01
E3500	316 STAINLESS	S			PTFE	T	GRAPHOIL	G	BUTT	BW	3/8"	02
					PEEK	P			THREADED	NPT	1/2"	03
											3/4"	04
											1"	05
											1-1/4"	06
											1-1/2"	07
											2"	08
											2-1/2"	09

E3200	W	S	P	G	BW	3/4"
-------	---	---	---	---	----	------



Elite Valve Canada
 775 Roper Street
 N7S 5G7
 Sarnia, Ontario, Canada
 www.elitevalve.com