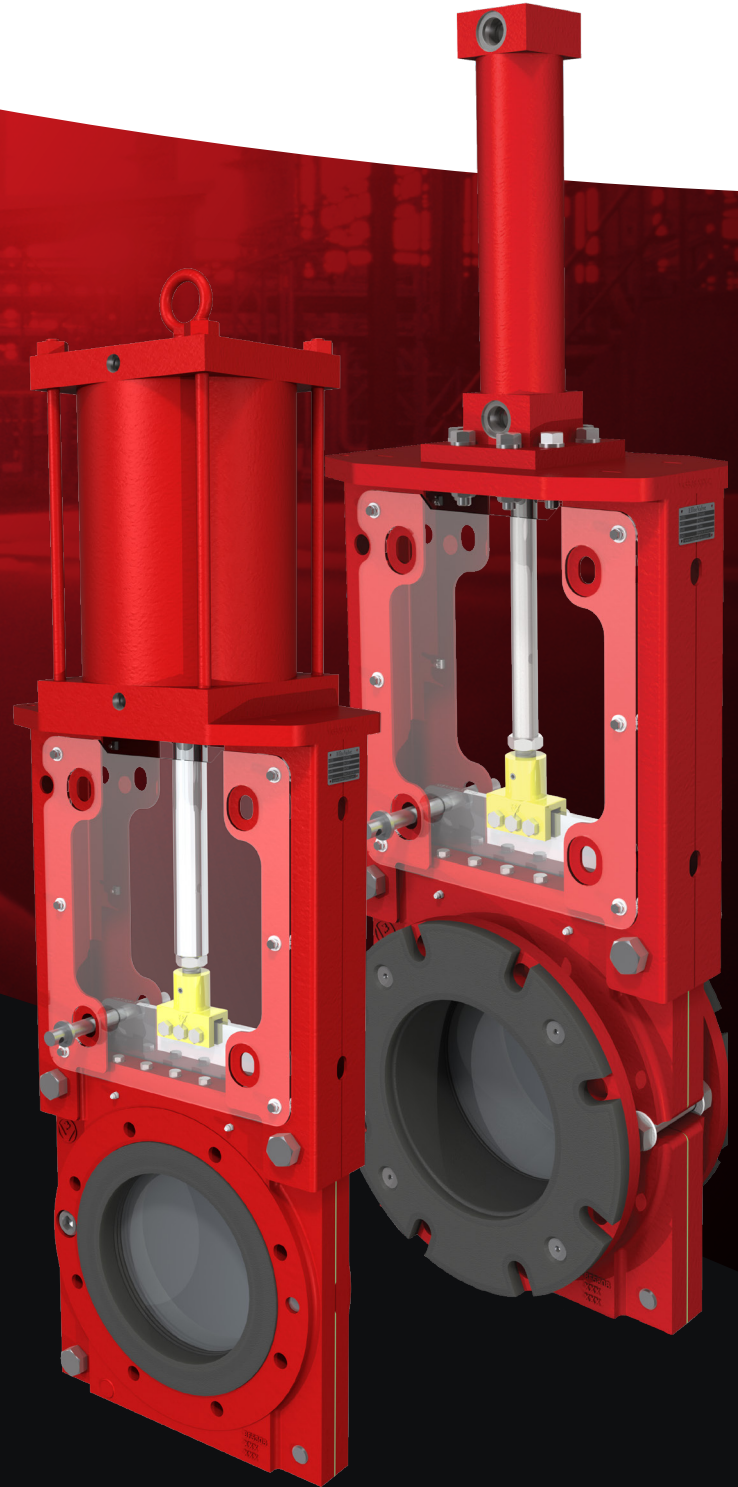


Elite Valve

elitevalve.com

Customized
valve solutions
for the toughest
applications

**E5300 & E5800
Heavy Slurry
Knife Gate Valve**



Offering both standard and custom-engineered solutions, Elite Valve can meet all your process requirements.



Contents

Introduction

- 4 About Elite Valve
- 5 Industries and Applicable Standards

E5300 Knife Gate Valve

- 7 E5300: Cutaway View
- 8 E5300: Exploded View and Material
- 10 E5300: Handwheel
- 11 E5300: Bevel Gear with Handwheel
- 12 E5300: Pneumatic Cylinder
- 13 E5300: Hydraulic Cylinder

E5800 Knife Gate Valve

- 15 E5800: Cutaway View
- 16 E5800: Exploded View and Material
- 18 E5800: Handwheel
- 19 E5800: Bevel Gear with Handwheel
- 20 E5800: Pneumatic Cylinder
- 21 E5800: Hydraulic Cylinder
- 22 How to Order
- 23 Notes

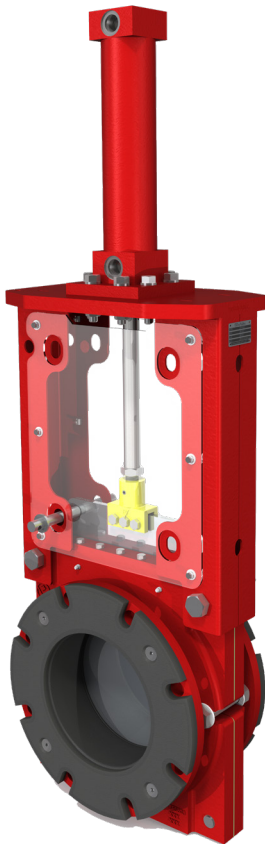


About Elite Valve

Elite Valve is committed to being a global leader, developing products and manufacturing technology that will offer a new level of acceptance. We recognize that all applications are not the same and as our client's processes change, so should the valve technology.

As an ISO 9001 company, our vision is to continue to develop manufacturing technology centers, while expanding our manufacturing partnerships on a global basis.

Our engineers are rewarded for innovative thinking, turning problems into opportunities, and advancing product performance. Our concept is simple, strive to be the very best possible! With these few words, we employ years of experience, hand crafting some of the best valves technology can offer. Our ability to provide both standardized and custom-engineered solutions allows us to meet the critical needs of customers for each application.





Introducing the E5300 and E5800 KGV

The E5300 Heavy Slurry KGV and E5800 Flanged Heavy Slurry KGV is designed for mining of all material and gemstone related applications including services that include rocks, heavy slurries, coarse powders and other abrasive materials. It is ideal for any rubber lined piping system.

Industries and Applicable Standards:

Our Heavy Slurry KGV is ideal for a wide range of industries including:

- Chemical
- Mining and Mineral
- Pulp and Paper
- Steel Mills
- Oil and Gas
- Power Generation
- Water/Waste Water Treatment Plants

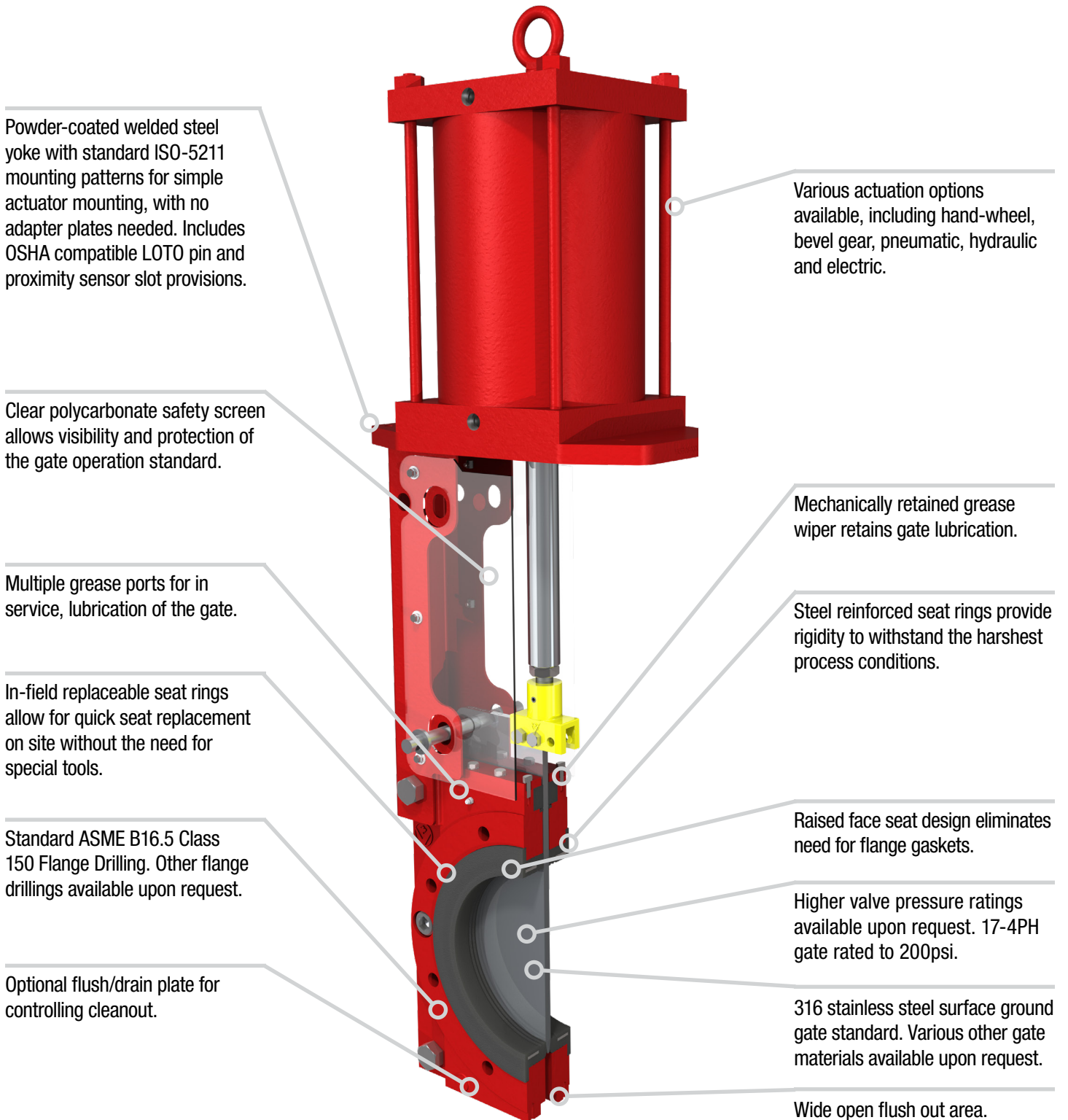
Elite Valve conforms with and/or has the following industry approvals.

- ASME B16.34
- ASME B16.5
- ASME B16.47
- MSS-SP81
- MSS-SP135
- MSS-SP152
- API 598
- API 607
- CRN
- ISO 9001



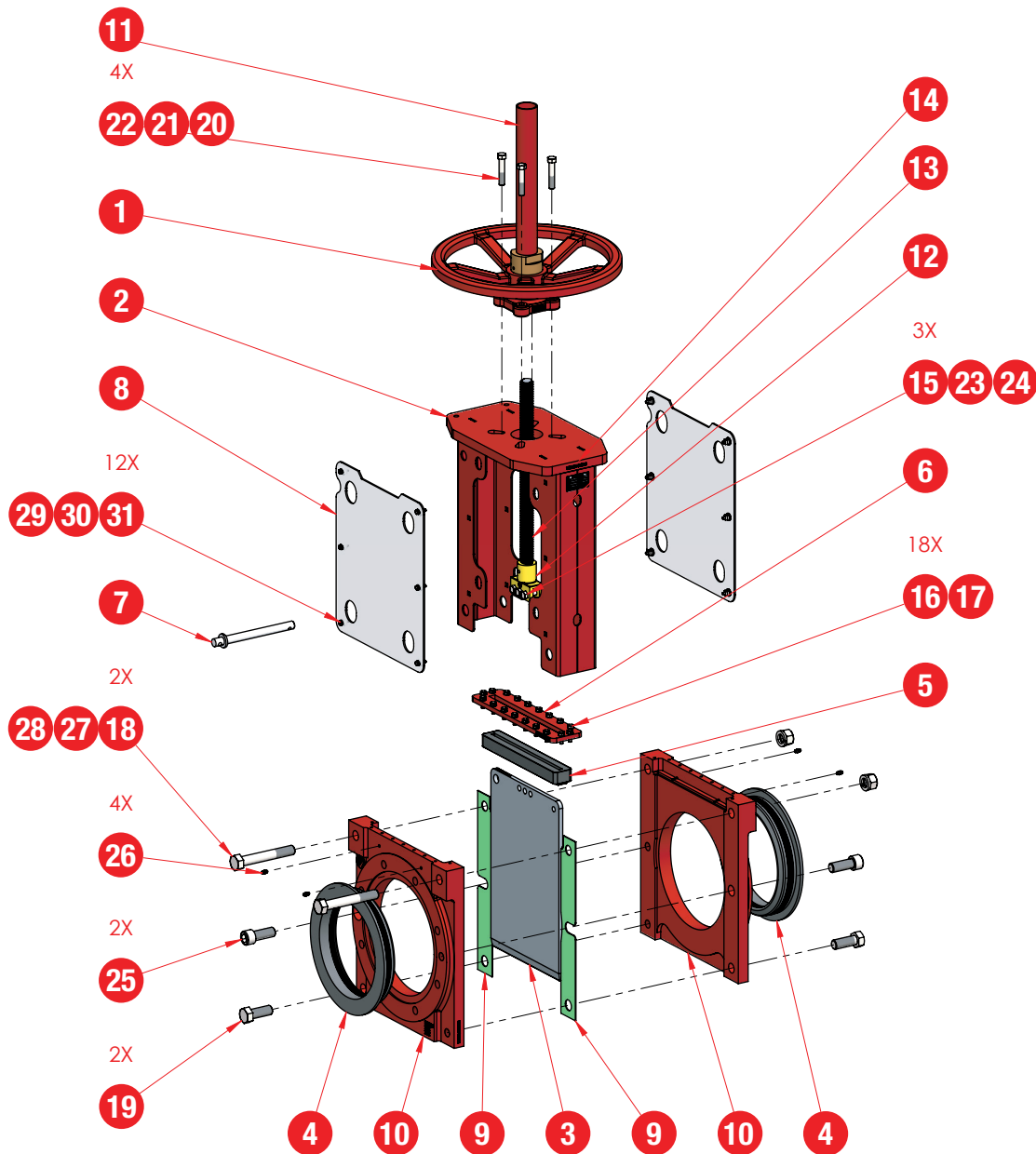
Elite Valve

E5300: Cutaway View



© Elite Valve, Oakville, ON, Canada. All rights reserved. Elite Valve Canada reserves the right to change this information without notice. All valves information and its contents hereof are proprietary to Elite Valve. Any unauthorized reproduction or disclosure, in whole or in part is strictly prohibited. All valves materials, images and data sheets in this catalogue / brochure is for general information and shall not be used for specific performance data and material selection without first consulting with Elite Valve. Elite Valve reserves the right to change the enclosed valves information without notice. Elite Valve does not accept any liability or damages arising from the use of any valve information within this document. All trademarks and registered trademarks are owned by their respective companies.

Typical parts breakout.
8" E5300 displayed.



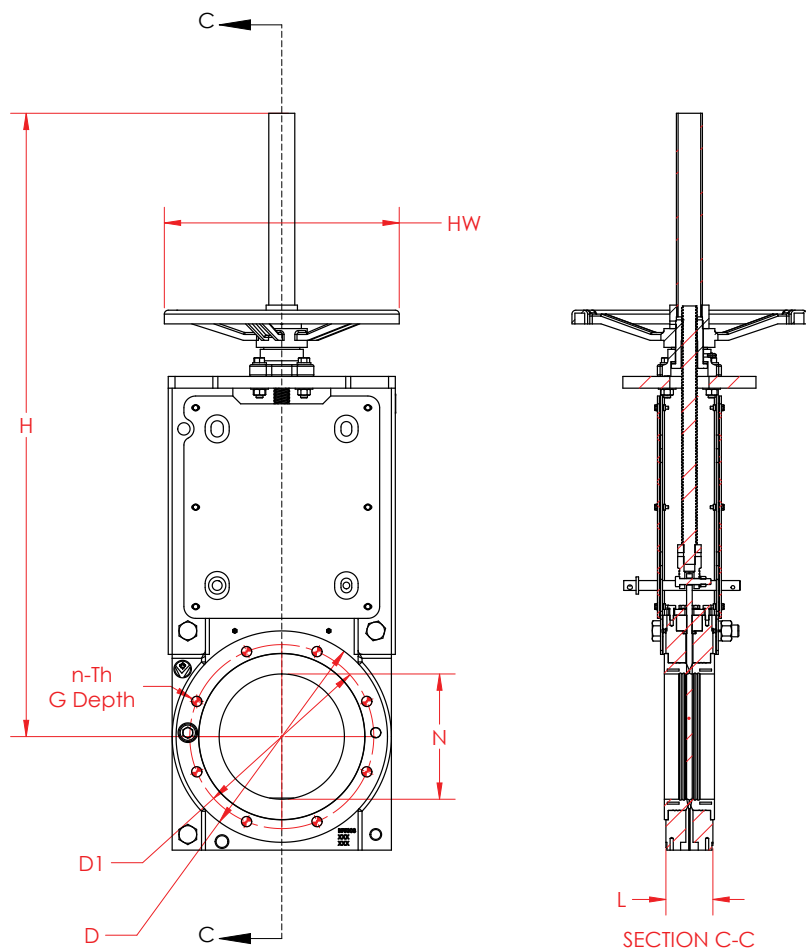
© Elite Valve, Oakville, ON, Canada. All rights reserved. Elite Valve Canada reserves the right to change this information without notice. All valves information and its contents hereof are proprietary to Elite Valve. Any unauthorized reproduction or disclosure, in whole or in part is strictly prohibited. All valves materials, images and data sheets in this catalogue / brochure is for general information and shall not be used for specific performance data and material selection without first consulting with Elite Valve. Elite Valve reserves the right to change the enclosed valves information without notice. Elite Valve does not accept any liability or damages arising from the use of any valve information within this document.

All trademarks and registered trademarks are owned by their respective companies.

E5300: Material

Materials			
Item Number	Part Number	Description	Qty
1	OPHW03-CS	HANDWHEEL 03, ASSEMBLY (8"-10")	1
2	YK5308-XXX	8" E5300, YOKE	1
3	GF5308-XXX	8" E5300, GATE, FINISHED	1
4	SR5308-XXX	8" E5300, SEAT RING	2
5	PKL5308-XXX	8" E5300, WIPER	1
6	PF5308-XXX	8" E5300, COVER PLATE	1
7	LP02-XXX	LOCKOUT PIN (Ø8"-Ø12")	1
8	YSS5308-XXX	8" 5300, YOKE SAFETY SCREEN	2
9	GAS5308B-XXX	8" E5300, GASKET, BODY	2
10	BF5308-XXX	8" E5300, BODY, FINISHED	2
11	SPR08-XXX	8" STEM PROTECTOR	1
12	CL02-XXX	CLEVIS 02	1
13	ST08-XXX	8" STEM	1
14	TAG-ELITE-KGV	KGV NAMEPLATE	1
15	HW-HHCS-0.375-16x2x1-188	3/8-16 x 2 x 1, HEX HEAD CAP SCREW, 18-8SS	3
16	HW-HHCS-0.25-20x0.75x0.75-188	1/4-20 x 0.75 x 0.75, HEX HEAD CAP SCREW, 18-8SS	18
17	HW-LW-0.25-188	1/4 SPRING LOCK WASHER, 18-8ss	18
18	HW-HHCS-0.75-10x5x1.75-188	3/4-10 x 5 x 1.75, HEX HEAD CAP SCREW, 18-8SS	2
19	HW-HHCS-0.75-10x2x1.75-188	3/4-10 x 2 x 1.75, HEX HEAD CAP SCREW, 18-8SS	2
20	HW-HN-0.4375-14-188	7/16-14 HEX NUT, 18-8ss	4
21	HW-FW-0.4375-188	7/16 FLAT WASHER, 18-8ss	4
22	HW-HHCS-0.4375-14x2.25x1.125-188	7/16-14 x 2.25 x 1.125, HEX HEAD CAP SCREW, 18-8SS	4
23	HW-HN-0.375-16-188	3/8-16 HEX NUT, 18-8ss	3
24	HW-LW-0.375-188	3/8 SPRING LOCK WASHER, 18-8ss	3
25	HW-SHCS-0.75-10x2x2-188	3/4-10 x 2 x 2, SOCKET HEAD CAP SCREW, 18-8SS	2
26	HW-GFS-0.2500-28-303	GREASE FITTING 1/4"-28 STRAIGHT	4
27	HW-LW-0.75-188	3/4 SPRING LOCK WASHER, 18-8ss	2
28	HW-HN-0.75-10-188	3/4-10 HEX NUT, 18-8ss	2
29	HW-GN-#10-NYL	#10 NYLON GROMMET NUT	12
30	HW-FW-#10-UHMW	#10 FLAT WASHER, UHMW	12
31	HW-HHCS-#10-24x0.75x0.75-188	#10-24 x 0.75 x 0.75, HEX HEAD CAP SCREW, 18-8SS	12

E5300: Handwheel

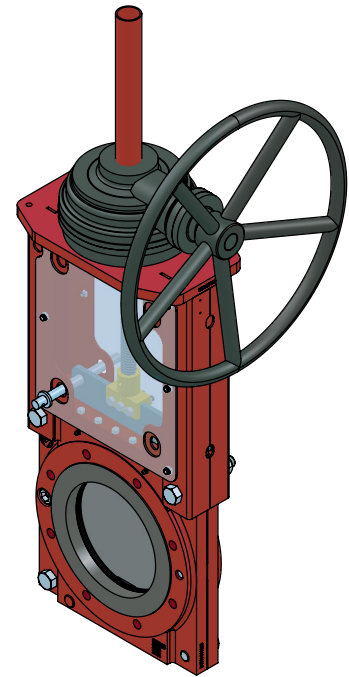
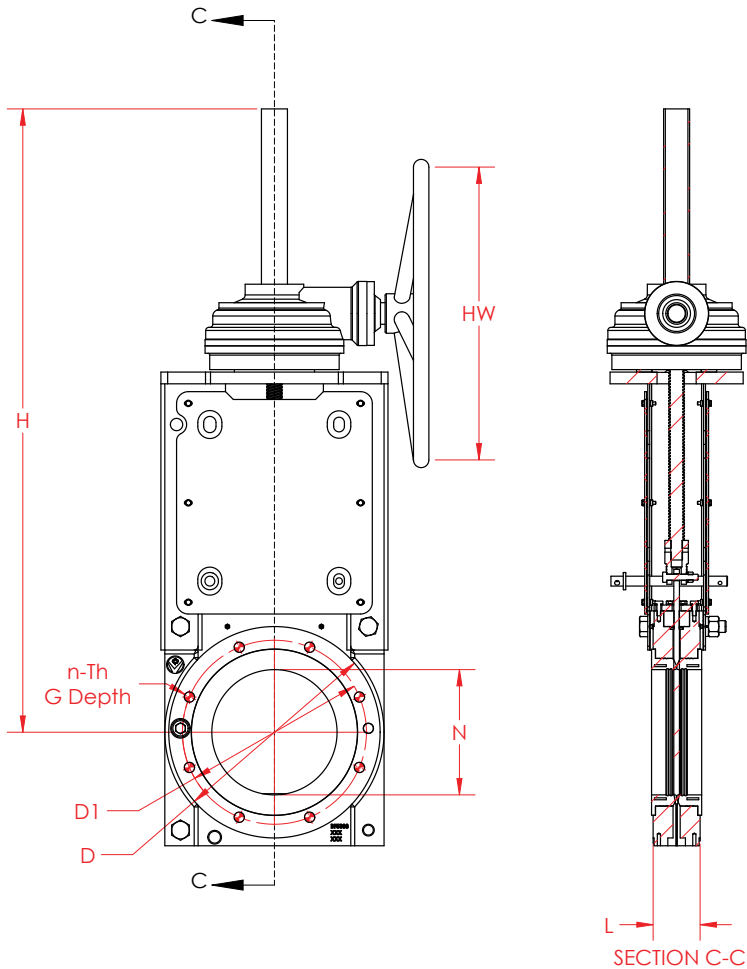


- Maximum working pressure class 2-12" 200PSI
- ASME B16.5 class 150 flange drilling 2-24"

Dimensions									
NPS	L	D	D1	N	n-Th	G	H	HW	Weight
	inch	inch	inch	inch	inch	inch	inch	inch	lbs
2	2.00	6.0	4.75	2.00	4 x 5/8"-11	0.45	22.0	8.0	47
3	2.25	7.5	6.00	3.00	4 x 5/8"-11	0.45	24.0	8.0	57
4	2.25	9.0	7.50	4.00	8 x 5/8"-11	0.45	26.0	12.0	70
6	2.50	11.0	9.50	6.00	8 x 3/4"-10	0.55	30.0	12.0	98
8	3.00	13.5	11.75	8.00	8 x 3/4"-10	0.69	39.5	15.0	156
10	3.00	16.0	14.25	10.00	12 x 7/8"-9	0.69	43.5	20.0	202
12	3.25	19.0	17.00	12.00	12 x 7/8"-9	0.69	47.5	20.0	277

© Elite Valve, Oakville, ON, Canada. All rights reserved. Elite Valve Canada reserves the right to change this information without notice. All valves information and its contents hereof are proprietary to Elite Valve. Any unauthorized reproduction or disclosure, in whole or in part is strictly prohibited. All valves materials, images and data sheets in this catalogue / brochure is for general information and shall not be used for specific performance data and material selection without first consulting with Elite Valve. Elite Valve reserves the right to change the enclosed valves information without notice. Elite Valve does not accept any liability or damages arising from the use of any valve information within this document. All trademarks and registered trademarks are owned by their respective companies.

E5300: Bevel Gear with Handwheel

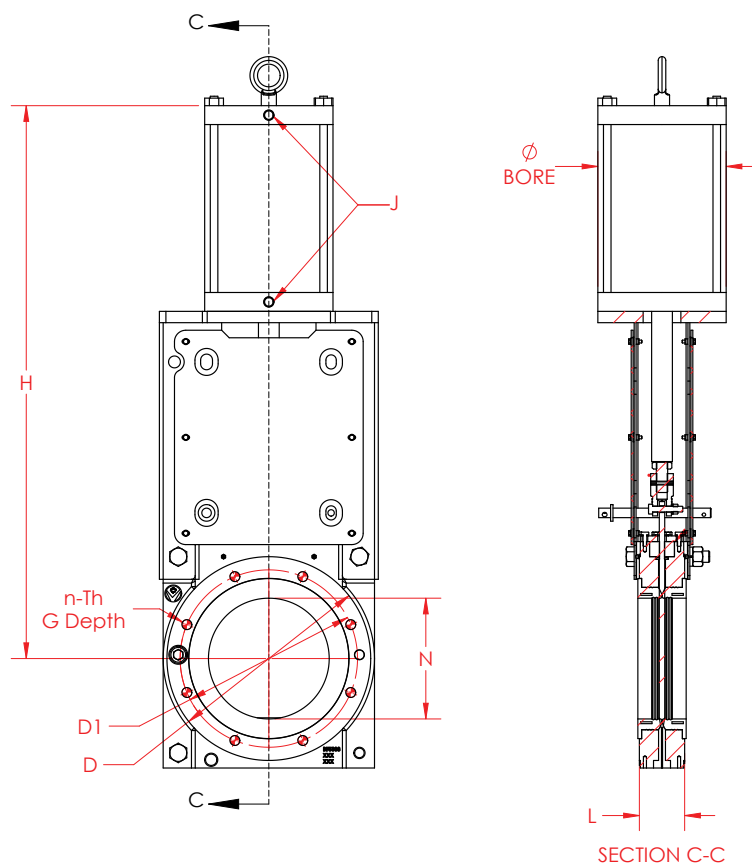


- Maximum working pressure class 2-16" 200PSI, 18-24" 90PSI
- ASME B16.5 class 150 flange drilling 2-24"

Dimensions									
NPS	L	D	D1	N	n-Th	G	H	HW	Weight
	inch	inch	inch	inch	inch	inch	inch	inch	lbs
2	2.00	6.0	4.75	2.00	4 x 5/8"-11	0.45	22.0	11.8	59
3	2.25	7.5	6.00	3.00	4 x 5/8"-11	0.45	24.0	11.8	68
4	2.25	9.0	7.50	4.00	8 x 5/8"-11	0.45	26.0	11.8	80
6	2.50	11.0	9.50	6.00	8 x 3/4"-10	0.55	30.0	11.8	107
8	3.00	13.5	11.75	8.00	8 x 3/4"-10	0.69	39.5	11.8	166
10	3.00	16.0	14.25	10.00	12 x 7/8"-9	0.69	43.5	11.8	211
12	3.25	19.0	17.00	12.00	12 x 7/8"-9	0.69	47.5	11.8	285
14	3.25	21.0	18.75	13.25	12 x 1"-8	0.75	53.5	15.75	498
16	3.75	23.5	21.25	15.25	16 x 1"-8	0.75	60.5	15.75	634
18	3.75	25.0	22.75	17.00	16 x 1-1/8"-7	0.88	68.0	15.75	701
20	4.50	27.5	25.00	19.03	20 x 1-1/8"-7	0.88	74.0	23.62	1151
24	4.50	32.0	29.50	23.21	20 x 1-1/4"-7	1.00	88.0	23.62	1619

© Elite Valve, Oakville, ON, Canada. All rights reserved. Elite Valve Canada reserves the right to change this information without notice. All valves information and its contents hereof are proprietary to Elite Valve. Any unauthorized reproduction or disclosure, in whole or in part is strictly prohibited. All valves materials, images and data sheets in this catalogue / brochure is for general information and shall not be used for specific performance data and material selection without first consulting with Elite Valve. Elite Valve reserves the right to change the enclosed valves information without notice. Elite Valve does not accept any liability or damages arising from the use of any valve information within this document. All trademarks and registered trademarks are owned by their respective companies.

E5300: Pneumatic Cylinder

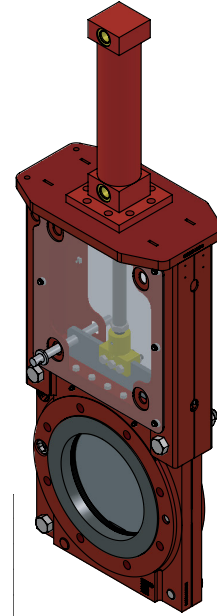
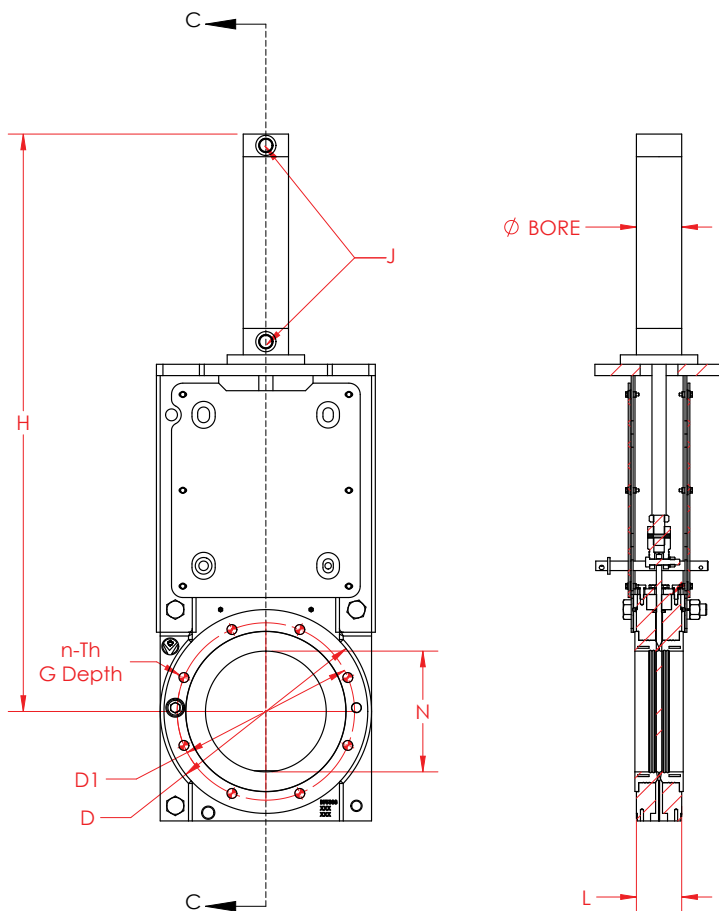


- Maximum working pressure class 2-16" 200PSI, 18-24" 90PSI
- Pneumatic cylinder rated for 150PSI
- Pneumatic cylinder sized for 60PSI supply
- ASME B16.5 class 150 flange drilling 2-24"

Dimensions										
NPS	L	D	D1	N	n-Th	G	H	J (NPT)	BORE	Weight
	inch	inch	inch	inch	inch	inch	inch	inch		lbs
2	2.00	6.0	4.75	2.00	4 x 5/8"-11	0.45	18.9	1/4	5.0	57
3	2.25	7.5	6.00	3.00	4 x 5/8"-11	0.45	21.1	1/4	5.0	67
4	2.25	9.0	7.50	4.00	8 x 5/8"-11	0.45	23.9	1/4	6.0	87
6	2.50	11.0	9.50	6.00	8 x 3/4"-10	0.55	30.0	1/4	8.0	147
8	3.00	13.5	11.75	8.00	8 x 3/4"-10	0.69	36.4	3/8	8.0	203
10	3.00	16.0	14.25	10.00	12 x 7/8"-9	0.69	42.6	3/8	10.0	331
12	3.25	19.0	17.00	12.00	12 x 7/8"-9	0.69	47.5	3/8	10.0	407
14	3.25	21.0	18.75	13.25	12 x 1"-8	0.75	57.6	1/2	14.0	663
16	3.75	23.5	21.25	15.25	16 x 1"-8	0.75	62.6	1/2	14.0	805
18	3.75	25.0	22.75	17.00	16 x 1-1/8"-7	0.88	68.5	1/2	14.0	983
20	4.50	27.5	25.00	19.03	20 x 1-1/8"-7	0.88	78.5	1/2	18.0	1562
24	4.50	32.0	29.50	23.21	20 x 1-1/4"-7	1.00	90.8	1/2	20.0	2318

© Elite Valve, Oakville, ON, Canada. All rights reserved. Elite Valve Canada reserves the right to change this information without notice. All valves information and its contents hereof are proprietary to Elite Valve. Any unauthorized reproduction or disclosure, in whole or in part is strictly prohibited. All valves materials, images and data sheets in this catalogue / brochure is for general information and shall not be used for specific performance data and material selection without first consulting with Elite Valve. Elite Valve reserves the right to change the enclosed valves information without notice. Elite Valve does not accept any liability or damages arising from the use of any valve information within this document. All trademarks and registered trademarks are owned by their respective companies.

E5300: Hydraulic Cylinder



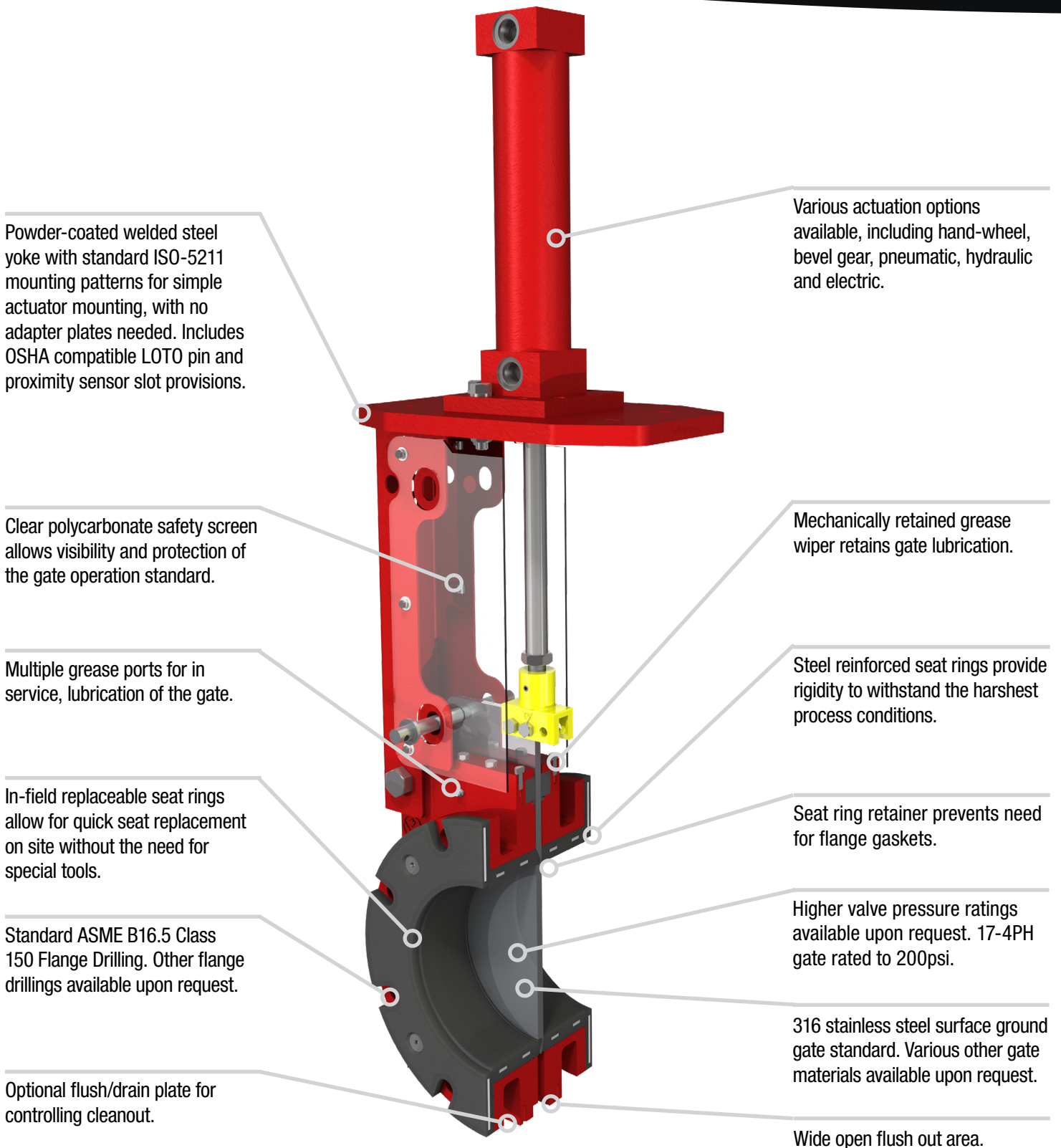
- Maximum working pressure class 2-16" 200PSI, 18"+ 90PSI
- Hydraulic cylinder rated for 3000PSI
- Hydraulic cylinder sized for 1600PSI supply
- ASME B16.5 class 150 flange drilling 2-24"

Dimensions										
NPS	L	D	D1	N	n-Th	G	H	J (NPT)	BORE	Weight
	inch	inch	inch	inch	inch	inch	inch	inch		lbs
2	2.00	6.0	4.75	2.00	4 x 5/8"-11	0.45	18.9	SAE -10	1.5	57
3	2.25	7.5	6.00	3.00	4 x 5/8"-11	0.45	21.1	SAE -10	1.5	67
4	2.25	9.0	7.50	4.00	8 x 5/8"-11	0.45	23.9	SAE -10	2.0	87
6	2.50	11.0	9.50	6.00	8 x 3/4"-10	0.55	30.0	SAE -10	2.0	147
8	3.00	13.5	11.75	8.00	8 x 3/4"-10	0.69	36.4	SAE -10	2.0	203
10	3.00	16.0	14.25	10.00	12 x 7/8"-9	0.69	42.6	SAE -10	2.0	331
12	3.25	19.0	17.00	12.00	12 x 7/8"-9	0.69	47.5	SAE -10	2.5	407
14	3.25	21.0	18.75	13.25	12 x 1"-8	0.75	57.6	SAE -12	2.5	663
16	3.75	23.5	21.25	15.25	16 x 1"-8	0.75	62.6	SAE -12	3.3	805
18	3.75	25.0	22.75	17.00	16 x 1-1/8"-7	0.88	68.5	SAE -12	3.3	983
20	4.50	27.5	25.00	19.03	20 x 1-1/8"-7	0.88	78.5	SAE -12	4.0	1562
24	4.50	32.0	29.50	23.21	20 x 1-1/4"-7	1.00	90.8	SAE -12	5.0	2318

© Elite Valve, Oakville, ON, Canada. All rights reserved. Elite Valve Canada reserves the right to change this information without notice. All valves information and its contents hereof are proprietary to Elite Valve. Any unauthorized reproduction or disclosure, in whole or in part is strictly prohibited. All valves materials, images and data sheets in this catalogue / brochure is for general information and shall not be used for specific performance data and material selection without first consulting with Elite Valve. Elite Valve reserves the right to change the enclosed valves information without notice. Elite Valve does not accept any liability or damages arising from the use of any valve information within this document. All trademarks and registered trademarks are owned by their respective companies.



E5800: Cutaway View

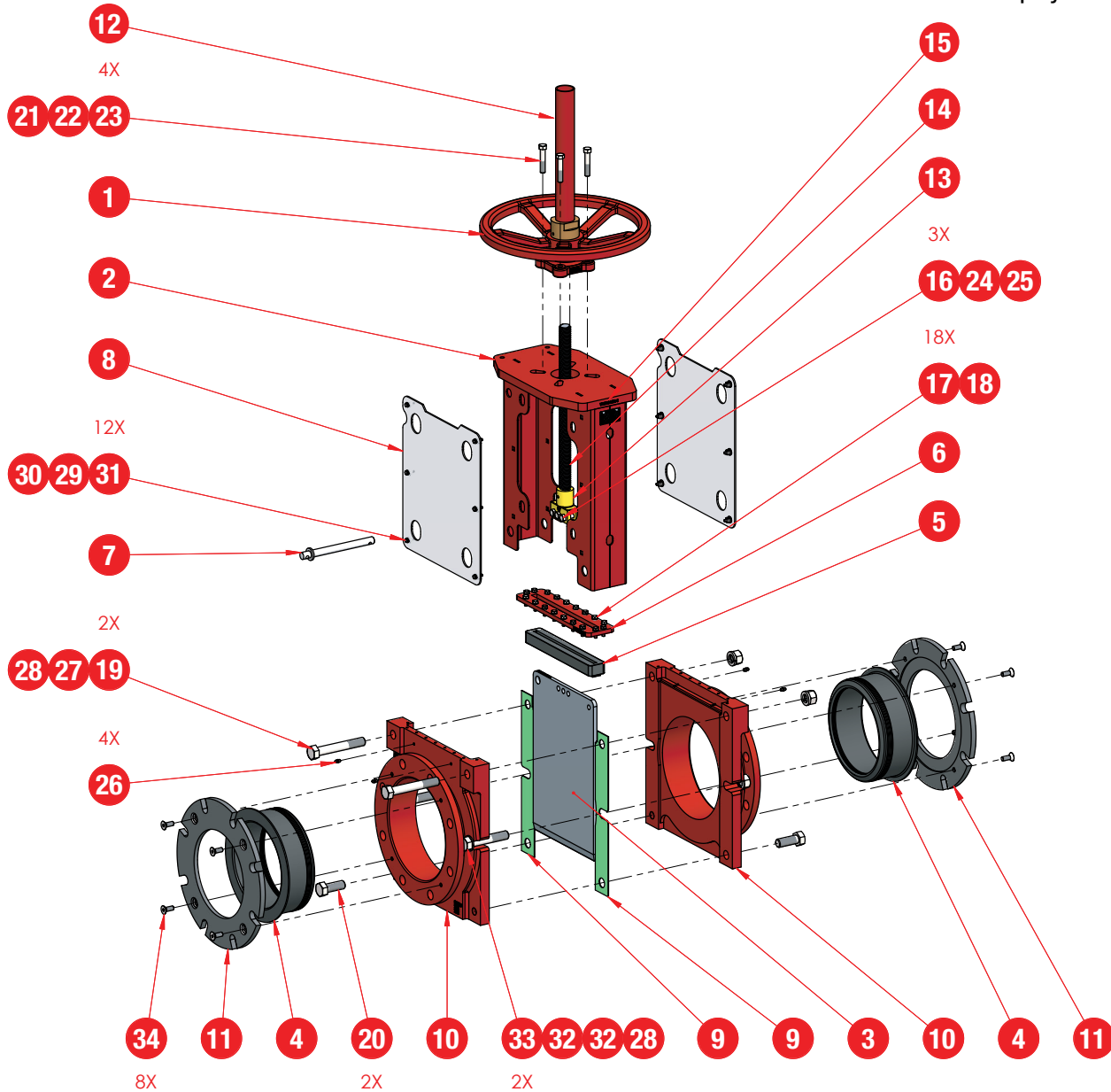


© Elite Valve, Oakville, ON, Canada. All rights reserved. Elite Valve Canada reserves the right to change this information without notice. All valves information and its contents hereof are proprietary to Elite Valve. Any unauthorized reproduction or disclosure, in whole or in part is strictly prohibited. All valves materials, images and data sheets in this catalogue / brochure is for general information and shall not be used for specific performance data and material selection without first consulting with Elite Valve. Elite Valve reserves the right to change the enclosed valves information without notice. Elite Valve does not accept any liability or damages arising from the use of any valve information within this document. All trademarks and registered trademarks are owned by their respective companies.

E5800: Exploded View

E5800: Exploded View

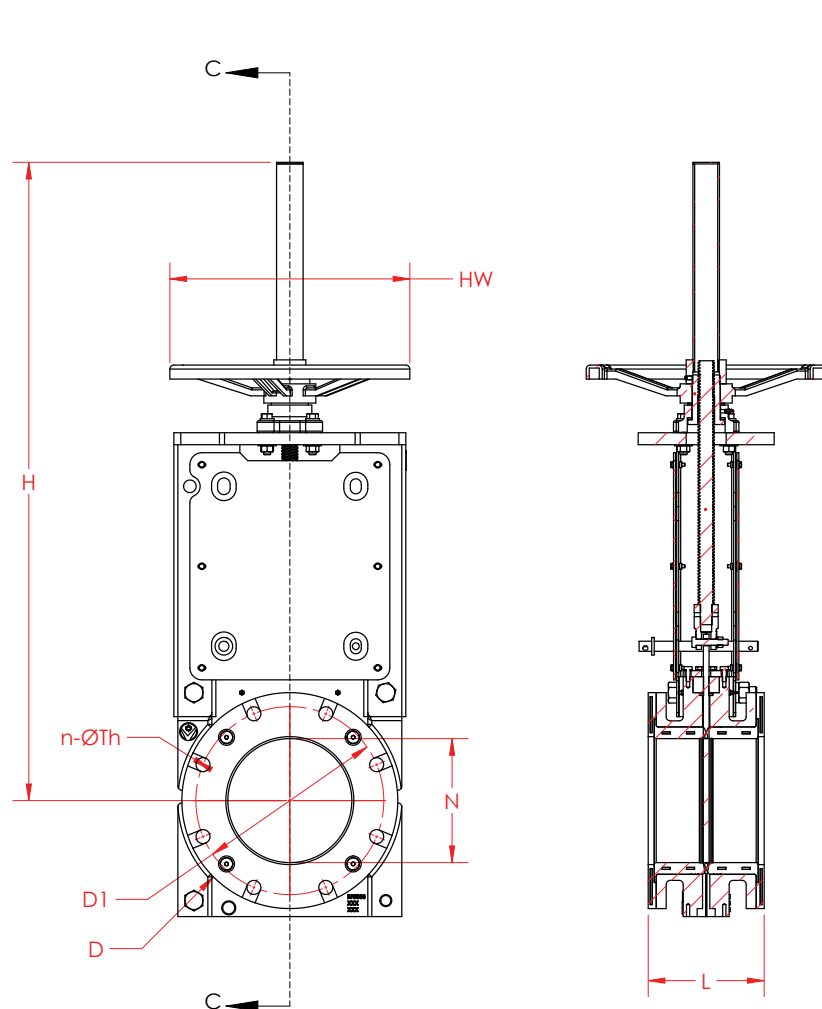
Typical parts breakout.
8" E5800 displayed.



E5800: Materials

Materials			
Item Number	Part Number	Description	Qty
1	OPHW03-CS	HANDWHEEL 03, ASSEMBLY (8"-10")	1
2	YK5308-XXX	8" E5300, YOKE	1
3	GF5308-XXX	8" E5300, GATE, FINISHED	1
4	SR5808-XXX	8" E5800, SEAT RING	2
5	PKL5308-XXX	8" E5300, WIPER	1
6	PF5308-XXX	8" E5300, COVER PLATE	1
7	LP02-XXX	LOCKOUT PIN (Ø8"-Ø12")	1
8	YSS5308-XXX	8" E5300, YOKE SAFETY SCREEN	2
9	GAS5308B-XXX	8" E5300, GASKET, BODY	2
10	BF5808-XXX	8" E5800, BODY, FINISHED	2
11	SRR5808-XXX	8" E5300, SEAT RETAINING RING	2
12	SPR08-XXX	8" STEM PROTECTOR	1
13	CL02-XXX	CLEVIS 02	1
14	ST08-XXX	8" STEM	1
15	TAG-ELITE-KGV	KGV NAMEPLATE	1
16	HW-HHCS-0.375-16x2x1-188	3/8-16 x 2 x 1, HEX HEAD CAP SCREW, 18-8SS	3
17	HW-HHCS-0.25-20x0.75x0.75-188	1/4-20 x 0.75 x 0.75, HEX HEAD CAP SCREW, 18-8SS	18
18	HW-LW-0.25-188	1/4 SPRING LOCK WASHER, 18-8ss	18
19	HW-HHCS-0.75-10x5x1.75-188	3/4-10 x 5 x 1.75, HEX HEAD CAP SCREW, 18-8SS	2
20	HW-HHCS-0.75-10x2x1.75-188	3/4-10 x 2 x 1.75, HEX HEAD CAP SCREW, 18-8SS	2
21	HW-HN-0.4375-14-188	7/16-14 HEX NUT, 18-8ss	4
22	HW-FW-0.4375-188	7/16 FLAT WASHER, 18-8ss	4
23	HW-HHCS-0.4375-14x2.25x1.125-188	7/16-14 x 2.25 x 1.125, HEX HEAD CAP SCREW, 18-8SS	4
24	HW-HN-0.375-16-188	3/8-16 HEX NUT, 18-8ss	3
25	HW-LW-0.375-188	3/8 SPRING LOCK WASHER, 18-8ss	3
26	HW-GFS-0.2500-28-303	GREASE FITTING 1/4"-28 STRAIGHT	4
27	HW-LW-0.75-188	3/4 SPRING LOCK WASHER, 18-8ss	2
28	HW-HN-0.75-10-188	3/4-10 HEX NUT, 18-8ss	4
29	HW-GN-#10-NYL	#10 NYLON GROMMET NUT	12
30	HW-FW-#10-UHMW	#10 FLAT WASHER, UHMW	12
31	HW-HHCS-#10-24x0.75x0.75-188	#10-24 x 0.75 x 0.75, HEX HEAD CAP SCREW, 18-8SS	12
32	HW-FW-0.75-188	3/4 FLAT NARROW WASHER, 18-8SS	4
33	HW-HHCS-0.75-10x4x1.75-188	3/4-10 x 4 x 1.75, HEX HEAD CAP SCREW, 18-8SS	2
34	HW-FHSCS-0.375-16x1x1-188	3/8-16 x 1 x 1 FLAT HEAD SOCKET CAP SCREW, 18-8SS	8

E5800: Handwheel

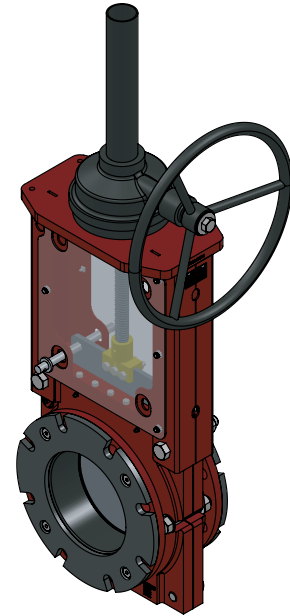
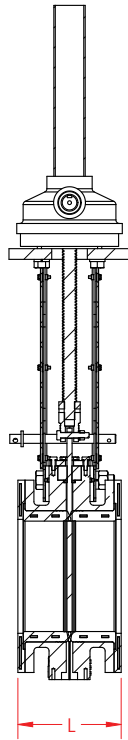
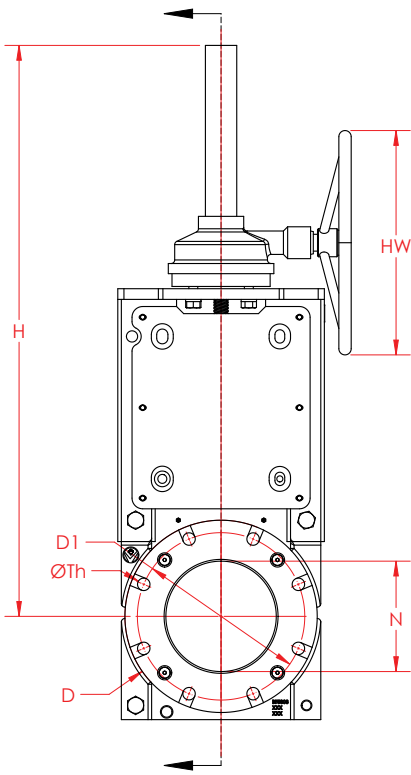


- Maximum working pressure class 2-12" 150PSI
- ASME B16.5 class 150 flange drilling 2-24"

Dimensions									
NPS	L	D	D1	N	ØTh	G	H	HW	Weight
	inch	inch	inch	inch	inch	inch	inch	inch	lbs
2	6.88	6.0	4.75	2.00	4X 0.75	0.45	22.0	8.0	54
3	6.88	7.5	6.00	3.00	4X 0.75	0.45	24.0	8.0	71
4	6.88	9.0	7.50	4.00	8X 0.75	0.45	26.0	12.0	90
6	7.00	11.0	9.50	6.00	8X 0.875	0.55	30.0	12.0	118
8	7.25	13.5	11.75	8.00	8X 0.875	0.69	39.5	15.0	191
10	8.88	16.0	14.25	10.00	12X 1.00	0.69	43.5	20.0	265
12	10.13	19.0	17.00	12.00	12X 1.00	0.69	47.5	20.0	394

© Elite Valve, Oakville, ON, Canada. All rights reserved. Elite Valve Canada reserves the right to change this information without notice. All valves information and its contents hereof are proprietary to Elite Valve. Any unauthorized reproduction or disclosure, in whole or in part is strictly prohibited. All valves materials, images and data sheets in this catalogue / brochure is for general information and shall not be used for specific performance data and material selection without first consulting with Elite Valve. Elite Valve reserves the right to change the enclosed valves information without notice. Elite Valve does not accept any liability or damages arising from the use of any valve information within this document. All trademarks and registered trademarks are owned by their respective companies.

E5800: Bevel Gear with Handwheel

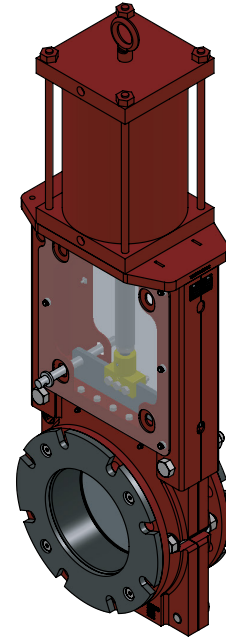
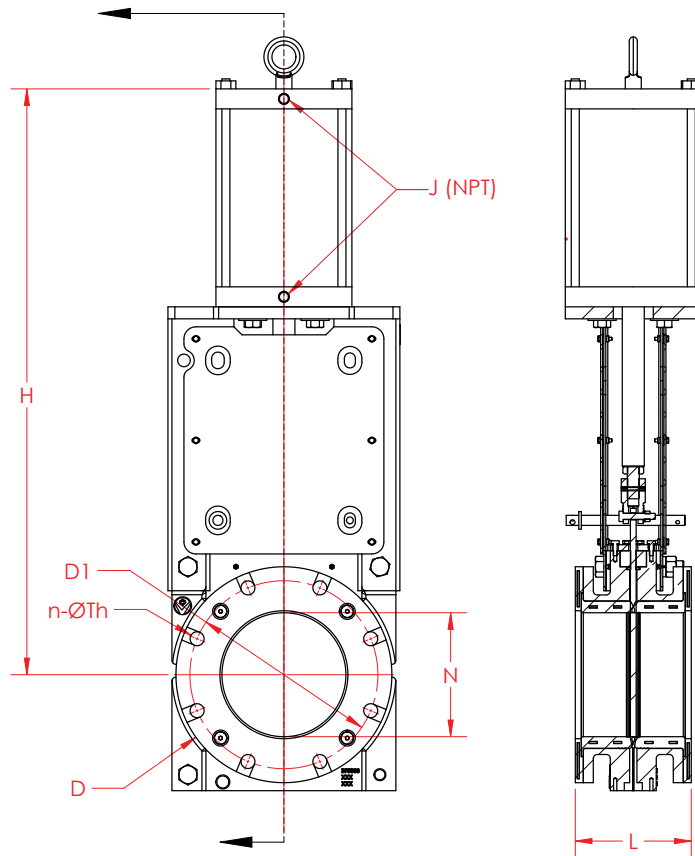


- Maximum working pressure class 2-24" 150PSI, 26-36" 100PSI
- ASME B16.5 class 150 flange drilling 2-24"
- ASME B16.47 series A class 150 flange drilling 26"+

Dimensions								
NPS	L	D	D1	N	ØTh	H	HW	Weight
	inch	inch	inch	inch	inch	inch	inch	lbs
2	6.88	6.0	4.75	1.81	4 x 0.75	22.0	11.8	66
3	6.88	7.5	6.00	2.81	4 x 0.75	24.0	11.8	82
4	6.88	9.0	7.50	3.88	8 x 0.75	26.0	11.8	100
6	7.00	11.0	9.50	5.81	8 x 0.875	30.0	11.8	127
8	7.25	13.5	11.75	7.75	8 x 0.875	39.5	11.8	201
10	8.88	16.0	14.25	9.81	12 x 1.0	43.5	11.8	274
12	10.13	19.0	17.00	11.50	12 x 1.0	47.5	11.8	402
14	10.13	21.0	18.75	13.25	12 x 1.125	53.5	15.7	646
16	11.00	23.5	21.25	14.75	16 x 1.125	60.5	15.7	846
18	12.25	25.0	22.75	16.75	16 x 1.25	68.0	15.7	1246
20	14.13	27.5	25.00	18.50	20 x 1.25	74.0	23.6	1546
24	14.63	32.0	29.50	23.00	20 x 1.25	88.0	23.6	2405
26	14.38	34.3	31.75	25.00	24 x 1.375	92.0	27.5	2554
28	14.88	36.5	34.00	25.00	28 x 1.375	94.0	27.5	2854
30	15.56	38.8	36.00	29.00	28 x 1.375	110.0	27.5	3154
32	16.19	41.8	38.50	29.00	28 x 1.625	128.0	27.5	3654
36	18.50	46.3	42.75	35.00	32 x 1.625	135.0	27.5	4854

© Elite Valve, Oakville, ON, Canada. All rights reserved. Elite Valve Canada reserves the right to change this information without notice. All valves information and its contents hereof are proprietary to Elite Valve. Any unauthorized reproduction or disclosure, in whole or in part is strictly prohibited. All valves materials, images and data sheets in this catalogue / brochure is for general information and shall not be used for specific performance data and material selection without first consulting with Elite Valve. Elite Valve reserves the right to change the enclosed valves information without notice. Elite Valve does not accept any liability or damages arising from the use of any valve information within this document. All trademarks and registered trademarks are owned by their respective companies.

E5800: Pneumatic Cylinder

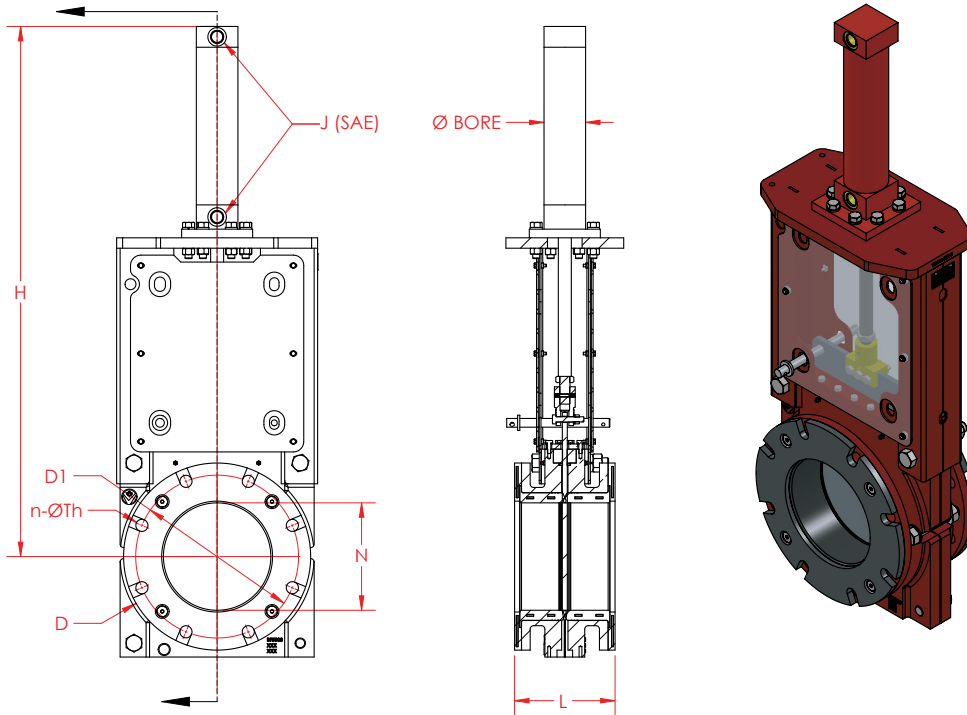


- Maximum working pressure class 2-16" 150PSI
- Pneumatic cylinder rated for 150PSI
- Pneumatic cylinder sized for 60PSI supply
- ASME B16.5 class 150 flange drilling 2-24"

Dimensions									
NPS	L	D	D1	N	n-ØTh	J (NPT)	H	BORE	Weight
	inch	inch	inch	inch	inch	inch	inch		lbs
2	6.88	6.0	4.75	1.81	4 x 0.75	1/4	18.9	5.0	64
3	6.88	7.5	6.00	2.81	4 x 0.75	1/4	21.1	5.0	81
4	6.88	9.0	7.50	3.88	8 x 0.75	1/4	23.9	6.0	107
6	7.00	11.0	9.50	5.81	8 x 0.875	1/4	30.0	8.0	167
8	7.25	13.5	11.75	7.75	8 x 0.875	3/8	36.4	8.0	238
10	8.88	16.0	14.25	9.81	12 x 1.0	3/8	42.6	10.0	394
12	10.13	19.0	17.00	11.50	12 x 1.0	3/8	47.5	10.0	524
14	10.13	21.0	18.75	13.25	12 x 1.125	1/2	57.6	14.0	811
16	11.00	23.5	21.25	14.75	16 x 1.125	1/2	62.6	14.0	1017
18	12.25	25.0	22.75	16.75	16 x 1.25	1/2	68.5	14.0	1528
20	14.13	27.5	25.00	18.50	20 x 1.25	1/2	78.5	18.0	1957
24	14.63	32.0	29.50	23.00	20 x 1.25	1/2	90.8	20.0	3104

© Elite Valve, Oakville, ON, Canada. All rights reserved. Elite Valve Canada reserves the right to change this information without notice. All valves information and its contents hereof are proprietary to Elite Valve. Any unauthorized reproduction or disclosure, in whole or in part is strictly prohibited. All valves materials, images and data sheets in this catalogue / brochure is for general information and shall not be used for specific performance data and material selection without first consulting with Elite Valve. Elite Valve reserves the right to change the enclosed valves information without notice. Elite Valve does not accept any liability or damages arising from the use of any valve information within this document. All trademarks and registered trademarks are owned by their respective companies.

E5800: Hydraulic Cylinder



- Maximum working pressure class 2-24" 150PSI, 26-48"+ 100PSI
- Hydraulic cylinder rated for 3000PSI
- Hydraulic cylinder sized for 1600PSI supply
- ASME B16.5 class 150 flange drilling 2-24"
- ASME B16.47 class 150 flange drilling 26-48"

Dimensions									
NPS	L	D	D1	N	Ø Th	J (SAE)	H	BORE	Weight
	inch	inch	inch	inch	inch	inch	inch		lbs
2	6.88	6.0	4.75	1.81	4 x 0.75	SAE -10	18.9	1.50	58
3	6.88	7.5	6.00	2.81	4 x 0.75	SAE -10	21.1	1.50	73
4	6.88	9.0	7.50	3.88	8 x 0.75	SAE -10	23.9	2.00	96
6	7.00	11.0	9.50	5.81	8 x 0.875	SAE -10	30.0	2.00	150
8	7.25	13.5	11.75	7.75	8 x 0.875	SAE -10	36.4	2.00	214
10	8.88	16.0	14.25	9.81	12 x 1.0	SAE -10	42.6	2.00	355
12	10.13	19.0	17.00	11.50	12 x 1.0	SAE -10	47.5	2.50	472
14	10.13	21.0	18.75	13.25	12 x 1.125	SAE -10	57.6	2.50	730
16	11.00	23.5	21.25	14.75	16 x 1.125	SAE -12	62.6	3.25	915
18	12.25	25.0	22.75	16.75	16 X 1.25	SAE -12	68.5	3.25	1375
20	14.13	27.5	25.00	18.50	20 X 1.25	SAE -12	78.5	4.00	1761
24	14.63	32.0	29.50	23.00	20 X 1.25	SAE -12	90.8	5.00	2794
26	14.38	34.25	31.75	25.0	24 X 1.375	SAE -12	108.0	5.00	3015
28	14.88	35.50	34.00	25.0	28 X 1.375	SAE -12	111.0	5.00	3465
30	15.57	38.75	36.00	29.0	28 X 1.375	SAE -16	121.0	6.00	3825
32	16.19	41.75	38.50	29.0	28 X 1.625	SAE -16	127.0	6.00	4365
36	18.50	46.00	42.75	35.0	32 X 1.625	SAE -16	134	6.00	5895
42	21.13	53.00	49.50	41.0	36 X 1.625	SAE -20	160	7.00	7920
48	21.13	59.50	56.00	46.8	44 X 1.625	SAE -24	173	8.00	10710

© Elite Valve, Oakville, ON, Canada. All rights reserved. Elite Valve Canada reserves the right to change this information without notice. All valves information and its contents hereof are proprietary to Elite Valve. Any unauthorized reproduction or disclosure, in whole or in part is strictly prohibited. All valves materials, images and data sheets in this catalogue / brochure is for general information and shall not be used for specific performance data and material selection without first consulting with Elite Valve. Elite Valve reserves the right to change the enclosed valves information without notice. Elite Valve does not accept any liability or damages arising from the use of any valve information within this document. All trademarks and registered trademarks are owned by their respective companies.

How to Order

How to Order

1	2	3	4	5	6	7	8	9
Model	Body	Gate	Seat Ring	TopWorks	Wiper	Operator	Size (in)	Options
XX	X	X	X	X	X	X —	X —	X

1	Model
E53	E5300
E58	E5800

2	Body
1	304 SS Cast A351 CF8 Wrought A240
2	316 SS Cast A351 CF8M Wrought A240
3	317 SS Cast A351 CG8M Wrought A240
4	2205 SS Cast A995 Gr. 4A CD3MN Wrought A240
5	254 SMO Cast A351 CK3MCuN Wrought A240
6	420 SS Heat Treated RC50 Cast - Wrought A240
7	Inconel 600 Cast A494 CY40 Wrought B168
8	Hastelloy C276 Cast A494 CW-12MW Wrought B575
9	Alloy 20 Cast A351 CN7M Wrought B463
C	Low Temp Carbon Steel Cast A352 LCC Wrought -
D	Ductile Iron Cast A536 60-40-18 Wrought -
L	904L Cast - Wrought B625
P	17-4 PH Cast A747 CB7Cu-1 Wrought A693
N	Ni-Resist Cast A439 D2 Wrought -
S	2507 SS Cast A995 Gr. 5A CE3MN Wrought A240
T	Titanium Grade 2 Cast B265 Gr. 2 Wrought B265
W	Carbon Steel Cast A216 WCB Wrought -

3	Gate
1	304 SS Wrought A240
2	316 SS Wrought A240
3	317 SS Wrought A240
4	2205 SS Wrought A240
5	254 SMO Wrought A240
6	420 SS Heat Treated RC50 Wrought A240
7	Inconel 600 Wrought B168
8	Hastelloy C276 Wrought B575
9	Alloy 20 Wrought B463
C	Chrome Plated 304 SS Wrought A240
H	2707 SS Wrought -
L	904L Wrought B625
P	17-4 PH Wrought A693
S	2507 SS Wrought A240
T	Titanium Wrought B265
W	Carbon Steel Wrought A516

4	Seat Ring
A	AFLAS (25°F - 500°F) (-4°C - 260°C)
B	BUNA N (-30°F - 250°F) (-34°C - 121°C)
E	EPDM (-65°F - 265°F) (-54°C - 129°C)
U	Polyurethane (-30°F - 180°F) (-34°C - 82°C)
S	Viton-GFS (-2°F - 400°F) (-19°C - 204°C)
R	Natural Rubber (-67°F - 180°F) (-55°C - 82°C)
V	Viton-B (-15°F - 437°F) (-26°C - 225°C)
G	Viton-GFLT (-15°F - 437°F) (-26°C - 225°C)
W	Viton-A White (FDA) (-15°F - 437°F) (-26°C - 225°C)
F	FFKM (5°F - 608°F) (-15°C - 320°C)
Z	Special

5	TopWorks
F	Fabricated Yoke
S	304 SS Stanchions
W	316 SS Yoke
Y	304 SS Yoke

6	Wiper
A	AFLAS (25°F - 500°F) (-4°C - 260°C)
B	BUNA N (-30°F - 250°F) (-34°C - 121°C)
E	EPDM (-65°F - 265°F) (-54°C - 129°C)
U	Polyurethane (-30°F - 180°F) (-34°C - 82°C)
S	Viton-GFS (-2°F - 400°F) (-19°C - 204°C)
R	Natural Rubber (-67°F - 180°F) (-55°C - 82°C)
V	Viton-B (-15°F - 437°F) (-26°C - 225°C)
G	Viton GFLT (-15°F - 437°F) (-26°C - 225°C)
W	Viton-A White (FDA) (-15°F - 437°F) (-26°C - 225°C)
F	FFKM (5°F to 608°F) (-15°C - 320°C)
Z	Special

7	Operator
B	Bare Stem
C	Chainwheel
C(N)	Chainwheel with Nut
E	Electric On/Off
E(M)	Electric Modulating
G	Gear
G(M)	Gear with Mechanical Interlock
G(N)	Gear with Nut
G(L)	Gear (Inline)
G(S)	Gear (Spur)
H	Hydraulic (Cylinder)
M	Mechanical Interlock
L	Lever
N	Nut
P	Pneumatic (HP Cylinder)
P(G)	Pneumatic (GP Cylinder)
R	Spring Closed (FC)
S	Spring Open (FO)
T	Ratchet
W	Handwheel
W(N)	Handwheel with Nut
X	No Stem (CLA Only)

8	Size
02	2
03	3
04	4
06	6
08	8
10	10
12	12
14	14
16	16
18	18
20	20
24	24
26	26
28	28
30	30
32	32
36	36
42	42
48	48

9	Options
	None
1	Xylan Coated Gate
2	Xylan Coated Wetted Parts
3	Chrome Coated Gate
4	Nedox Coated Gate
5	API 607 Fire Safe Design
7	Silicone Free
8	Low Temp Actuator Seals
9	High Temp Actuator Seals
A	Oversized Pneumatic Cylinder
B	Safety Guards
C	Through Port Gate
E	Stem Extension
F	Air Filter / Reg
J	Drain Plate
P	Purge Ports
Q	Junction Box Kit
S	Solenoid
T	Positioner
X	Open/Close Proximity Sensors
Y	Bellows Stem Protector

© Elite Valve, Oakville, ON, Canada. All rights reserved. Elite Valve Canada reserves the right to change this information without notice. All valves information and its contents hereof are proprietary to Elite Valve. Any unauthorized reproduction or disclosure, in whole or in part is strictly prohibited. All valves materials, images and data sheets in this catalogue / brochure is for general information and shall not be used for specific performance data and material selection without first consulting with Elite Valve. Elite Valve reserves the right to change the enclosed valves information without notice. Elite Valve does not accept any liability or damages arising from the use of any valve information within this document. All trademarks and registered trademarks are owned by their respective companies.

Customized valve solutions for the toughest applications

Visit us online today at **elitevalve.com**

Elite Valve



Elite Valve is committed to being a global leader in valve technology. We recognize that not all process applications are the same, and as our clients' processes vary, so should the valve technology they use. Registered as an ISO 9001 company, Elite Valve is committed to maintaining valve manufacturing technology centers, and delivering a reliable product every time called upon. In support of this commitment, Elite Valve has strategically located manufacturing and service centers within North America.

Our engineers are rewarded for innovative thinking... turning problems into opportunities and advancing product performance. Working closely with our customers is encouraged. Our modus operandi is "Strive to be the very best". It can be seen in the work we do daily. With these few words, we employ years of experience, handcrafting some of the best products available. Our ability to provide both standardized and custom-engineered solutions allows us to meet all your needs, in the most critical of applications.



2305 Wyecroft Road
Oakville, Ontario L6L 6R2



Local: (519) 756-3100
Toll-Free: (888) 339-7758



sales@elitevalve.com