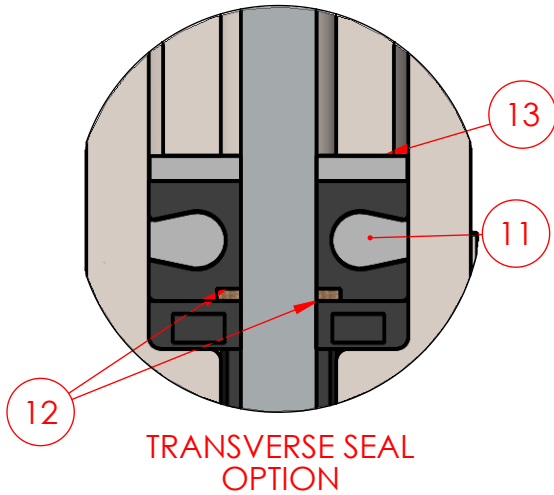
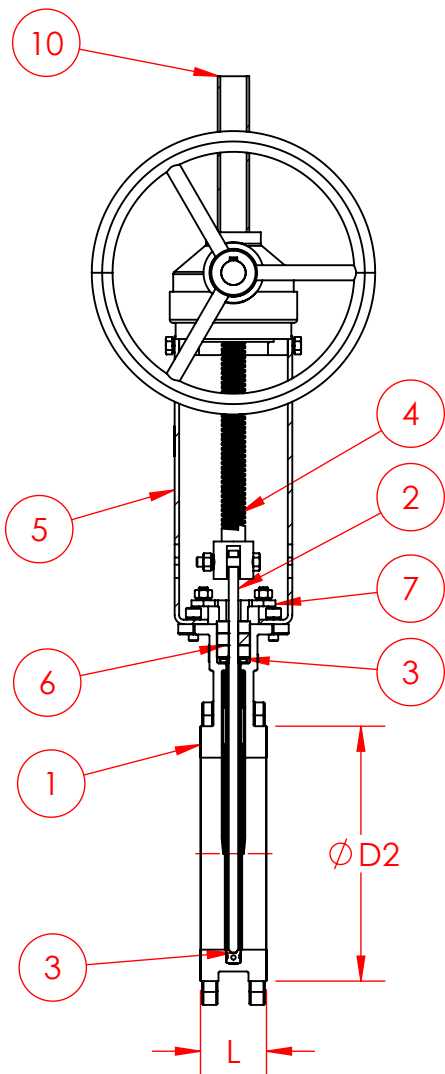
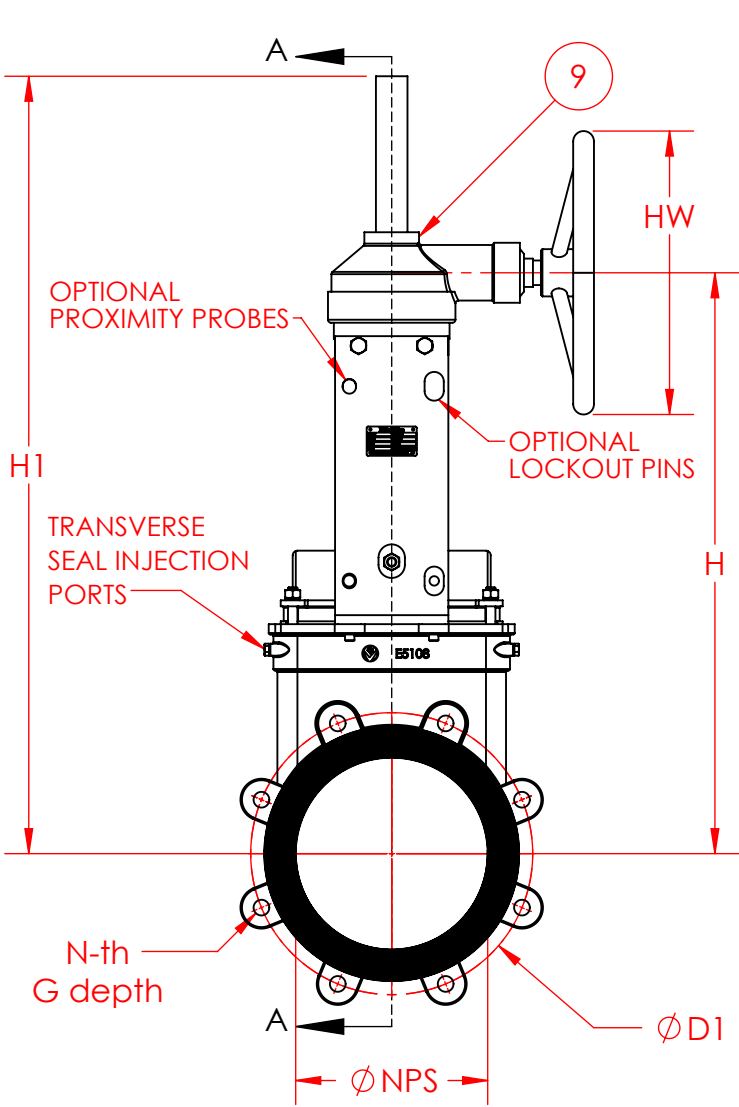


REVISIONS			
REV.	DESCRIPTION	DRAWN	DATE
A	INITIAL RELEASE	BDK	2022-07-18



Model	Code
E5100	E51

Body			
Common Name	Cast	Wrought	Code
316 SS	A316L	A240	1
316 SS	A316L	A240	2
317 SS	A316L	A240	3
2205 SS	A995 Gr. AA CCBMN	A240	4
254 SMO	A316L	A240	5
A206 Heat Treated RC50	-	A240	6
Inconel 600	-	B168	7
Hastelloy C276	A494C W-12MW	B575	8
Alloy 20	A316L	B463	9
Low Temp Carbon Steel	A352LCC	-	C
Ductile Iron	A536 60-40-18	-	D
904L	-	B625	L
17-4 PH	A747C B7C u-1	A593	P
Ni-Resist	A439 D2	-	N
2507 SS	A995 Gr. SA CCBMN	A240	S
Titanium Grade 2	B265 Gr. 2	B265	T
Carbon Steel	A216 WCB	-	W

Gate			
Common Name	Wrought	Code	
316 SS	A240	1	
317 SS	A240	3	
2205 SS	A240	4	
254 SMO	A240	5	
A206 Heat Treated RC50	A240	6	
Inconel 600	B168	7	
Hastelloy C276	B575	8	
Alloy 20	B463	9	
Chrome Plated 304 SS	A240	C	
2707 SS	-	H	
904L	B625	L	
17-4 PH	A593	P	
2507 SS	A240	S	
Titanium	B265	T	
Carbon Steel	A516	W	

Seat			
		Code	
Alfa (25°F - 300°F) (-4°C - 260°C)	-	A	
BUNA N (-30°F - 250°F) (-34°C - 121°C)	-	B	
EPDM (-65°F - 265°F) (-54°C - 129°C)	-	E	
Polyurethane (-30°F - 180°F) (-34°C - 82°C)	-	U	
Viton® G5 (-27°F - 400°F) (-19°C - 204°C)	-	S	
Viton® GFL (-15°F - 437°F) (-26°C - 225°C)	-	G	
Viton® A White (FDA) (-15°F - 437°F) (-26°C - 225°C)	-	W	
FKM (5°F to 608°F) (-15°C - 320°C)	-	F	
Special	-	Z	

THIRD ANGLE PROJECTION
TYPICAL ADDON / MODIFICATION

TopWorks			
		Code	
Fabricated Yoke	-	F	
Pressure Bonnet	-	P	
304 SS Stanchions	-	S	
316 SS Yoke	-	W	
304 SS Yoke	-	W	

Transverse Seal / Packing / Scrapers			
Braided Rope Packing		Code	Aider Code
PTFE		T1	
Graphite		(G)	
PTFE Injectable Packing (400°F, 204°C max)			Standard
CE Phenolic Scrapers (257°F / 125°C max)			
Alfa (25°F - 300°F) (-4°C - 260°C)		A	
BUNA N (-30°F - 250°F) (-34°C - 121°C)		B	
EPDM (-65°F - 265°F) (-54°C - 129°C)		E	
Polyurethane (-30°F - 180°F) (-34°C - 82°C)		U	
Viton® G5 (-27°F - 400°F) (-19°C - 204°C)		S	
Viton® GFL (-15°F - 437°F) (-26°C - 225°C)		G	
Viton® A White (FDA) (-15°F - 437°F) (-26°C - 225°C)		W	
FKM (5°F to 608°F) (-15°C - 320°C)		F	
Special		Z	
Substitute Injectable Packing Material		Aider Code	
FDA PTFE Injectable Packing (400°F, 204°C max)		(F)	
Graphite Injectable Packing (1200°F, 650°C max)		(G)	
Substitute Scraper Material		Aider Code	
G-7 Phenolic Scrapers (430°F / 220°C max)		(7)	
A206 Heat Treated RC50		(B)	
Inconel 600		(I)	
Brass		(B)	

Operator			
		Code	
Bare Stem	-	B	
Chainwheel with Nut	-	C	
Chainwheel with Nut	-	CIN	
Electric DryOff	-	E	
Electric Modulating	-	(EM)	
Gear with Mechanical Interlock	-	GMI	
Gear with Nut	-	(GN)	
Gear (Inline)	-	(GI)	
Gear (Spur)	-	(GS)	
Hydraulic (Cylinder)	-	H	
Mechanical Interlock	-	M	
Lever	-	L	
Nut	-	N	
Pneumatic (BIP Cylinder)	-	P	
Pneumatic (BIP Cylinder)	-	(PIG)	
Spring Closed (PC)	-	R	
Spring Open (PO)	-	S	
Batchet	-	T	
Handwheel	-	W	
Handwheel with Nut	-	(WN)	
No Stem (CLA Only)	-	X	

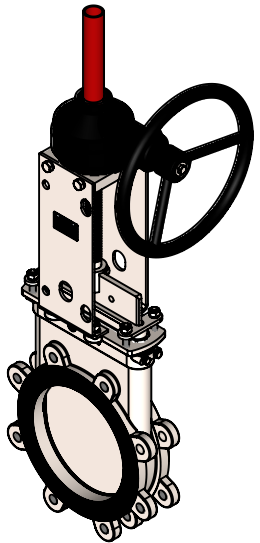
Size			
		Code	
2	02		
3	03		
4	04		
6	06		
8	08		
10	10		
12	12		
14	14		
16	16		
18	18		
20	20		
24	24		
28	28		
30	30		
36	36		
42	42		
48	48		
54	54		
60	60		
66	66		
Options			
Name:		Code	
Mylon Coated Gate		1	
Mylon Coated Wristed Parts		2	
Chrome Coated Gate		3	
Nickel Coated Gate		4	
Stainless Free		7	
NA Content		8	
ALS Requirement		9	
Overseas Cylinder		A	
Safety Guards		B	
Stem Extension		C	
Air Filter / Reg.		F	
Emergency		S	
Horsehoe		H	
Wear Ring		K	
Non-Rising Stem		N	
Lockouts		O	
Purge Ports		P	
Function Box Kit		Q	
Solenooid		S	
Positioner		T	
V-port		V	
Open/Close Prox Probes		X	
Stem Protector		Y	

- NOTES:
- 1) MAXIMUM OPERATING PRESSURE: 150PSI
 - 2) 100% FULL PORT STD. PIPE ID.
 - 3) PERIMETER, RESILIENT SEATED AND BI-DIRECTIONAL.
 - 4) DESIGNED AND TESTED AS PER MSS-SP81.
 - 5) DIMENSIONS (IN)
 - 6) WEIGHT (lbs)

S.NO	DESCRIPTION	MATERIAL	QTY
1	BODY	REFER TO CHART	1
2	GATE	REFER TO CHART	1
3	SEAT	REFER TO CHART	1
4	STEM	REFER TO CHART	1
5	YOKE	304SS	2
6	PACKING	REFER TO CHART	TBD
7	PACKING GLAND	REFER TO CHART	1
8	YOKE BRIDGE(ISO-MOUNT)	REFER TO CHART	1
9	GEARBOX	CI	1
10	STEM COVER	CI	1
11	TRANSVERSE SEAL*(w/ PKG)	REFER TO CHART	1
12	SCRAPER*	REFER TO CHART	2
13	SEAL SPACER*	UHMW	1
14	HARDWARE	18-8SS	TBD

* OPTIONAL ADDON

NPS	L	D1	D2	n-Th	G	H	H1	HW	WEIGHT
2	1.88	4.75	3.6	4 x 5/8"-11	0.39	12.7	15.7	11.8	41
3	2.00	6.00	5.0	4 x 5/8"-11	0.39	15.6	19.6	11.8	46
4	2.00	7.50	6.2	8 x 5/8"-11	0.47	17.4	22.4	11.8	54
6	2.25	9.50	8.5	8 x 3/4"-10	0.55	21.9	28.9	11.8	75
8	2.75	11.75	10.6	8 x 3/4"-10	0.63	24.9	33.9	11.8	104
10	2.75	14.25	12.8	12 x 7/8"-9	0.67	27.8	38.8	11.8	131
12	3.00	17.00	15.0	12 x 7/8"-9	0.67	31.8	44.6	11.8	164
14	3.00	18.75	16.3	12 x 1"-8	0.67	36.8	51.6	11.8	219
16	3.50	21.25	18.5	16 x 1"-8	0.79	41.3	58.1	15.8	294
18	3.50	22.75	21.0	16 x 1-1/8"-7	0.79	46.6	65.4	15.8	361
20	4.50	25.00	23.0	20 x 1-1/8"-7	0.87	50.6	71.1	15.8	472
24	4.50	29.50	27.3	20 x 1-1/4"-7	0.87	59.3	83.8	15.8	626



UNLESS OTHERWISE SPECIFIED			
INTERPRET DIMENSIONS AND TOLERANCES PER ASME Y14.5M-1994			
ALL DIMENSIONS SHOWN APPLY AFTER PLATING AND COATING TOLERANCES APPLY AS SHOWN BELOW			
FRACTIONS	± 1/32	NONE	± .02
ANGLES	± .1°	.X	± 0.1
SURFACE FINISH	32 ✓	.XX	± .02
UOM	INCH	.XXX	± .005

THIRD ANGLE PROJECTION			
THE INFORMATION CONTAINED IN THIS DRAWING IS CONFIDENTIAL AND PROPRIETARY AND REMAINS THE EXCLUSIVE PROPERTY OF ELITE VALVE CANADA. THIS DRAWING MAY NOT BE USED, REPRODUCED IN WHOLE OR IN PART, NOR REVEALED TO OTHERS WITHOUT THE WRITTEN CONSENT OF ELITE VALVE CANADA.			
BY ACCEPTANCE OF THIS DRAWING, THE BEARER AGREES TO THESE CONDITIONS.			
DRAWN BY:	BDK	2021-02-19	
CHECKED BY:	-	-	

EliteValve		2305 WYECROFT RD. OAKVILLE, ON, L6L 6R2	
www.elitevalve.com		TEL: 519.756.3100	
FAX: 519.756.3663			
JOB NO:		JOB NAME:	
DWG NAME:		REV:	
E5100 Bidirectional Perimeter Seated KGV w/ Gearbox		A	
DWG NO:		E51XXXXXG-XX(2 - 24)	
SIZE A		SCALE: 1:12	
SHEET 1 OF 1			